

INSPECTED ARTICLE(S)



A. GENERAL INFORMATION

Client Name		P.O. Number	87646
Vendor Name		Item Number	DDP-2069S/DDP-2069M/DDP-2069L/DDP-2069XL/DDP-2069XXL/DDP-1345XS/DDP-1345S/DDP-1345M/DDP-1132S
Inspection Date	2022-10-25	Product Name	WOODEN DOG HOUSE
Inspection Location	Xiamen, Fujian, China	Booking/Shipment Total Quantity	1540pcs/ 1540pcs
Inspection Type	Final Random Inspection (FRI)	Combined Sampling	Yes

B. INSPECTION RESULTS

OVERALL CONCLUSION	<p>Pending Due to Remark# 1, 2, 3 & 4</p>
---------------------------	--

INSPECTION SUMMARY	Conform	Not Conform	Pending	Not Applicable	Remark
Client special check points				✓	N/A
Visual and Workmanship	✓				N/A
Quantity Conformity	✓				N/A
Product & Package Conformity			✓		1, 2, 3, 4
Data Measurement / Field Test	✓				N/A

C1. PROBLEM REMARKS

NO.	Description
1	For all items, no approval sample was provided for style & color comparison on site.
2	For all items, no any Packing / Marking / Labeling spec. were provided for inspection reference on site.
3	For item#DDP-1345XS/DDP-1345S/DDP-1345M: found the actual size marking "S/ M/ L" was printed on carton and color label, which was different with PI stated as "DDP-1345XS/DDP-1345S/DDP-1345M".
4	For item#DDP-1132S, found no any polystyrene boards inside the carton that not conformed to client's requirement.



Remark 2: Marking size S printed on color label for item#DDP-1345XS.

Remark 2: Marking size S printed on carton for item#DDP-1345XS.



Remark 2: Marking size M on color label for item#DDP-1345S

Remark 2: Marking size M printed on carton for item#DDP-1345S



Remark 2: Marking size L on color label for item#DDP-1345M

Remark 2: Marking size L printed on carton for item#DDP-1345M



Remark 2: item# DDP-1345XS/ DDP-1345S/ DDP-1345M stated on PI

Remark# 4(1)



- for each product:
- The Metal Brand logo is well fixed
- Thickness of panels
- Cleanliness
- No mold, no moisture
- Solidity
- Painting (Homogeneous, not scaled, no rust / oxidation)
- No wear (must not be a reconditioned product), mold or moisture, blow or rust (metal parts)
- Clean products
- Check materials: treated fir wood, roof covered with asphalt bituminous mineral paper
- Test all openings (iron latches ==> also check that they are not rusty)
- Check the strength of the packaging (no DROP TEST), the products must be well protected: **strong carton corners on each corner + two polystyrene boards per carton**
- Check that the barcode is readable by scanner
- Color label on each carton and shipping marks on slices

Remark# 4(2)

Remark# 4 Inspection points

C2. INFORMATIVE REMARKS

NO.	Description
1	All inspection photos you can reach at below link www.testcoo.com/original_photos

D. Client Special Check Points

Item	Title	Client special check point	Result
N/A			

E. Visual and Workmanship

Inspection Standard	ANSI/ASQ Z1.4 Single Sampling Plan		
Inspection Level	I		
Defect Classification	Critical	Major	Minor
AQL	0	2.5	4.0
Sample Size	50	50	50
Max Allowed	0	3	5
Total Found	0	2	4

Note: You directed that your inspection be based upon Combined sampling, Testcoo advises all clients of the risks associated with "Combined Sampling" where several different product styles are combined to make a single lot size. Combined Sampling represents an increased level of risk to you as statistical rules are compromised and the chances of missing quality issues are much greater than during single style sampling. We disclaim any liability to you if you make decisions concerning the acceptance, payment authorization, or shipment of the inspected goods based upon Combined Sampling.

Details of Defect Found	Critical	Major	Minor
For Item #DDP-2069S, Sample Size: 8pcs			
Cracked mark on wood board 5.0cm	0	1	0
For Item #DDP-2069M, Sample Size: 8pcs			
Repair mark on wood board 2.5cm	0	0	1
For Item #DDP-2069L, Sample Size: 8pcs			
Poor coating on wood board 2.0cm	0	0	1
For Item #DDP-2069XL, Sample Size: 6pcs			
Cracked mark on wood board 5.5cm	0	1	0
For Item #DDP-2069XXL, Sample Size: 6pcs			
No Defect	0	0	0
For Item #DDP-1345XS, Sample Size: 3pcs			
Paint stain on surface 2.0cm	0	0	1
For Item #DDP-1345S, Sample Size: 4pcs			
No Defect	0	0	0
For Item #DDP-1345M, Sample Size: 3pcs			
No Defect	0	0	0
For Item #DDP-1132S, Sample Size: 4pcs			
Chipped on bottom board 1.5cm	0	0	1

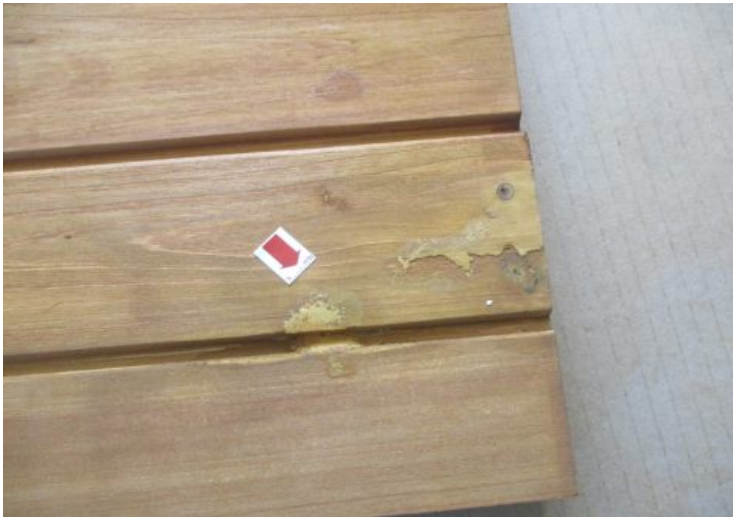
For Item #DDP-2069S



Major defect: cracked mark

N/A

For Item #DDP-2069M



Minor defect: repair mark

N/A

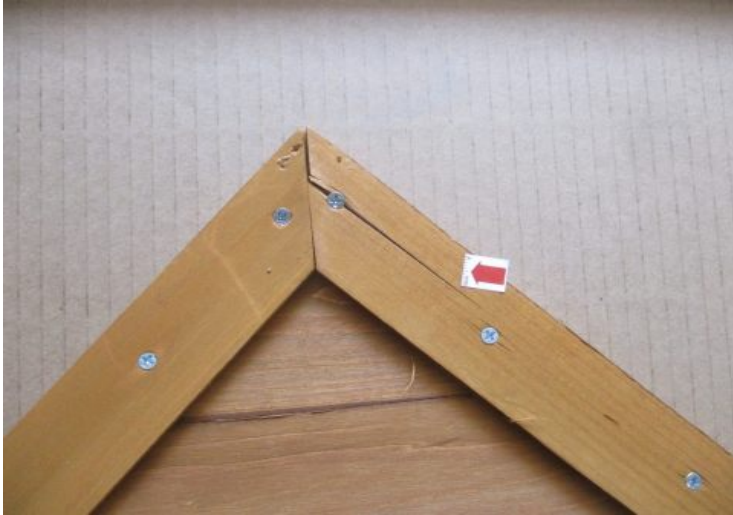
For Item #DDP-2069L



Minor defect: poor paint

N/A

For Item #DDP-2069XL



Major defect: cracked mark

N/A

For Item #DDP-1345XS



Minor defect: paint stain

N/A

For Item #DDP-1132S



Minor defect: chipped on bottom board

N/A

F. Quantity Conformity

Item Number	P.O. No	Order Qty	Shipment Qty	Presented Qty for inspection		Number of Cartons		QTY Not Finished
				Packed	Not packed	Packed	Not packed	
DDP-2069S	87646	250	250	250	0	250	0	0
DDP-2069M	87646	200	200	200	0	200	0	0
DDP-2069L	87646	250	250	250	0	250	0	0
DDP-2069XL	87646	200	200	200	0	200	0	0
DDP-2069XXL	87646	200	200	200	0	200	0	0
DDP-1345XS	87646	100	100	100	0	100	0	0
DDP-1345S	87646	120	120	120	0	120	0	0
DDP-1345M	87646	100	100	100	0	100	0	0
DDP-1132S	87646	120	120	120	0	120	0	0
Total		1540	1540	1540	0	1540	0	0
Total 50 cartons were selected randomly Selected carton number								
If carton number available	No							

G. Product and Package Against Approval Sample/Documents

Inspection Reference	Contract			
Check point	Conform	Not Conform	Pending	Not Applicable
Product Appearance			✓	
Accessories				✓
Packing	✓			
Labeling / Marking			✓	

Packing method

For Item #DDP-2069S	
Unit Package	Package: Others
	Remark: 1set per carton and protected by poly foam and paper.
Inner Packing	Quantity: N/A Package: Not Applicable
	Remark: N/A
Outer Packing	Quantity: 1set Package: Export Carton
	Length: 81.5cm Width: 44.7cm Height: 16.2cm Weight: 9.8kg
	Remark: Double corrugated export carton and sealed with gummed tapes

For Item #DDP-2069M	
Unit Package	Package: Others
	Remark: 1set per carton and protected by poly foam and paper.
Inner Packing	Quantity: N/A Package: Not Applicable
	Remark: N/A
Outer Packing	Quantity: 1set Package: Export Carton
	Length: 92.5cm Width: 44.8cm Height: 16.2cm Weight: 15.0kg
	Remark: Double corrugated export carton and sealed with gummed tapes
For Item #DDP-2069L	
Unit Package	Package: Others
	Remark: 1set per carton and protected by poly foam and paper.
Inner Packing	Quantity: N/A Package: Not Applicable
	Remark: N/A
Outer Packing	Quantity: 1set Package: Export Carton
	Length: 99.0cm Width: 65.1cm Height: 16.1cm Weight: 18.2kg
	Remark: Double corrugated export carton and sealed with gummed tapes
For Item #DDP-2069XL	
Unit Package	Package: Not Applicable
	Remark: 1set per carton and protected by poly foam and paper.
Inner Packing	Quantity: N/A Package: Not Applicable
	Remark: N/A
Outer Packing	Quantity: 1set Package: Export Carton
	Length: 113.5cm Width: 68.0cm Height: 16.0cm Weight: 23.0kg
	Remark: Double corrugated export carton and sealed with gummed tapes
For Item #DDP-2069XXL	
Unit Package	Package: Not Applicable
	Remark: 1set per carton and protected by poly foam and paper.
Inner Packing	Quantity: N/A Package: Not Applicable
	Remark: N/A
Outer Packing	Quantity: 1sets Package: Export Carton
	Length: 124.7cm Width: 77.7cm Height: 16.5cm Weight: 29.2kg
	Remark: Double corrugated export carton and sealed with gummed tapes
For Item #DDP-1345XS	
Unit Package	Package: Not Applicable
	Remark: 1set per carton and protected by poly foam and paper.
Inner Packing	Quantity: N/A Package: Not Applicable
	Remark: N/A
Outer Packing	Quantity: 1set Package: Export Carton
	Length: 101.3cm Width: 62.2cm Height: 15.0cm Weight: 15.4kg
	Remark: Double corrugated export carton and sealed with gummed tapes

For Item #DDP-1345S	
Unit Package	Package: Not Applicable
	Remark: 1set per carton and protected by poly foam and paper.
Inner Packing	Quantity: N/A Package: Not Applicable
	Remark: N/A
Outer Packing	Quantity: 1set Package: Export Carton
	Length: 135.5cm Width: 73.3cm Height: 14.7cm Weight: 22.6kg
	Remark: Double corrugated export carton and sealed with gummed tapes
For Item #DDP-1345M	
Unit Package	Package: Not Applicable
	Remark: 1set per carton and protected by poly foam and paper.
Inner Packing	Quantity: N/A Package: Not Applicable
	Remark: N/A
Outer Packing	Quantity: 1set Package: Export Carton
	Length: 151.0cm Width: 81.0cm Height: 16.5cm Weight: 29.2kg
	Remark: Double corrugated export carton and sealed with gummed tapes
For Item #DDP-1132S	
Unit Package	Package: Not Applicable
	Remark: 1set per carton and protected by poly foam and paper.
Inner Packing	Quantity: N/A Package: Not Applicable
	Remark: N/A
Outer Packing	Quantity: 1set Package: Export Carton
	Length: 75.0cm Width: 52.0cm Height: 15.5cm Weight: 10.6kg
	Remark: Double corrugated export carton and sealed with gummed tapes

H. Data Measurement / Field Test

	Test Item	Test Requirement	Test Data	Test Quantity	Test Result
1	Product Size / Weight Measurement	According to product spec or approved sample. Apply +/- 3% if no detail tolerance issued or requirement from client	Please refer to below measurement chart	2pcs per style	Actual Finding
2	Barcode scan check	The barcode must be scannable and with the correct number.	No failure	2pcs per style	Conform
3	Assembly check	Assembly according to the instruction manual or guide on package to see the component is complete, assembly steps is suitable & the finished product is good performance	No failure	2pcs per style	Conform
4	Function check (for the function which only can be checked after fully assembling.)	All captioned function is well conducted as intended. such as installation/adjusting, switch/knob action check, actual using function etc. all of function should be complied with claims.	No failure	2pcs per style	Conform
5	Moisture check for wood component	Insert the pins of tester in wooden 6mm depth along the grain. (for un-contact method, the tester should be close to testing surface). Then read the result. The wooden material moisture content should be with 7%-14% if no detail requirement.	Please refer to below measurement chart	2pcs per style	Conform
6	Stability check	Place sample on a plane at an angle of 10 degree to horizontal, and the sample can be with load as intended use and should not tip over in any of the most unfavourable positions.	No failure	2pcs per style	Conform
7	Carton Assortment and Quantity Check	Place sample on a plane at an angle of 10 degree to horizontal, and the sample can be with load as intended use and should not tip over in any of the most unfavourable positions.	No failure	2pcs per style	Conform
8	Smell Test	No unwanted bad or irritative smell.	No failure	All sample size	Conform
9	Wobbling test for assembled products	Fully assemble the sample according to assembly instruction or printing information Place the sample on the flat board horizontally No base shall be allowed wobbling.	No failure	2pcs per style	Conform

Measurement chart

Item No.,	Checking.,	Product weight (kg),	Product size (mm),	Panel thickness (mm),	Moisture check ,	Carton size (cm),	Carton weight (kg),
DDP-2069S.,	Spec.,	--.,	540x770x630.,	--.,	7%-14%.,	--.,	--.,
	Sample 1.,	9.8.,	533x773x626.,	9.72.,	8.,	81.5x44.7x16.2.,	9.8.,
	Sample 2.,	9.7.,	535x775x627.,	9.80.,	7.,		
DDP-2069M.,	Spec.,	--.,	650x880x730.,	--.,	7%-14%.,	--.,	--.,
	Sample 1.,	13.2.,	648x884x722.,	9.62.,	8.,	92.5x44.8x16.2.,	15.0.,
	Sample 2.,	13.1.,	650x882x725.,	9.77.,	9.,		
DDP-2069L.,	Spec.,	--.,	750x950x800.,	--.,	7%-14%.,	--.,	--.,
	Sample 1.,	16.2.,	750x857x793.,	9.66.,	8.,	99.0x65.1x16.1.,	18.2.,
	Sample 2.,	16.1.,	748x855x795.,	9.68.,	7.,		
DDP-2069XL.,	Spec.,	--.,	850x1110x960.,	--.,	7%-14%.,	--.,	--.,
	Sample 1.,	20.8.,	847x1113x950.,	9.67.,	8.,	113.5x68.0x16.0.,	23.0.,
	Sample 2.,	20.7.,	848x1115x955.,	9.64.,	7.,		
DDP-2069XXL.,	Spec.,	--.,	970x1220x1060.,	--.,	7%-14%.,	--.,	--.,
	Sample 1.,	26.9.,	960x1223x1045.,	9.64.,	8.,	124.7x77.7x16.5.,	29.2.,
	Sample 2.,	26.8.,	965x1223x1050.,	9.66.,	7.,		
DDP-1345XS.,	Spec.,	--.,	980x580x640.,	--.,	7%-14%.,	--.,	--.,
	Sample 1.,	13.5.,	982x583x638.,	9.60.,	8.,	101.3x62.2x15.0.,	15.4.,
	Sample 2.,	13.4.,	982x582x640.,	9.64.,	7.,		
DDP-1345S.,	Spec.,	--.,	1330x720x605.,	--.,	7%-14%.,	--.,	--.,
	Sample 1.,	20.2.,	1329x722x607.,	9.59.,	7.,	135.5x73.3x14.7.,	22.6.,
	Sample 2.,	20.1.,	1330x724x606.,	9.62.,	8.,		
DDP-1345M.,	Spec.,	--.,	1480x800x800.,	--.,	7%-14%.,	--.,	--.,
	Sample 1.,	25.5.,	1480x798x801.,	9.57.,	7.,	151.0x81.0x16.5.,	29.2.,
	Sample 2.,	25.4.,	1480x800x801.,	9.62.,	8.,		
DDP-1132S.,	Spec.,	--.,	700x498x730.,	--.,	7%-14%.,	--.,	--.,
	Sample 1.,	9.0.,	699x498x735.,	9.73.,	8.,	75.0x52.0x15.5.,	10.6.,
	Sample 2.,	8.9.,	700x498x735.,	9.68.,	7.,		

I. INSPECTION PHOTO (All inspection related photos with descriptions)

For Item #DDP-2069S



Outer carton view



Outer carton view



Color label



Marking details



Marking details



Shipping mark printed four sides



Marking details



Marking details



Open carton view



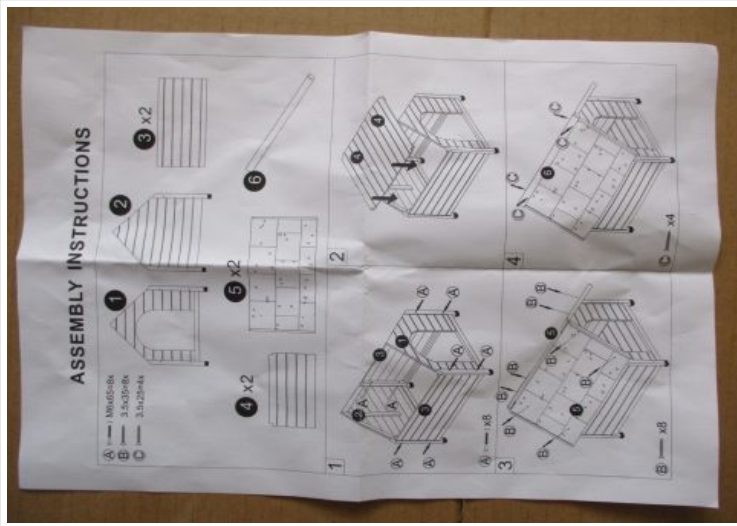
5ply carton for all items



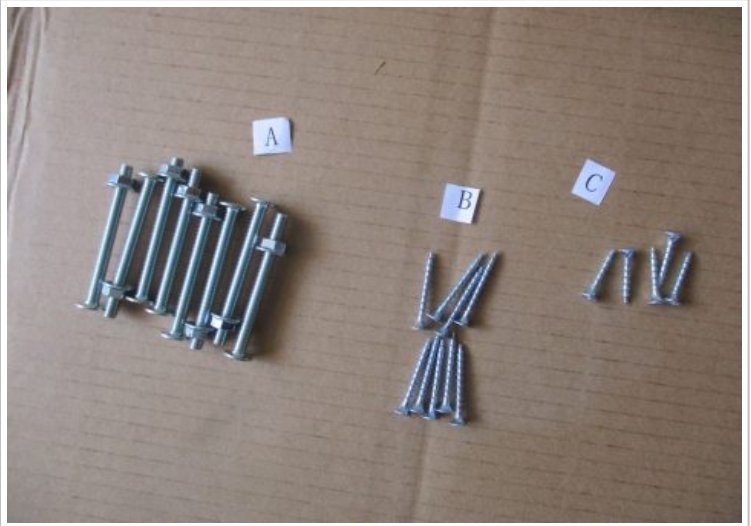
Product packaging



Set product



Instruction manual



Hardware pack



Product view



Brand plate



Product view



Product view



Product view



Product view

For Item #DDP-2069M



Outer carton view



Outer carton view



Color label



Marking details



Marking details



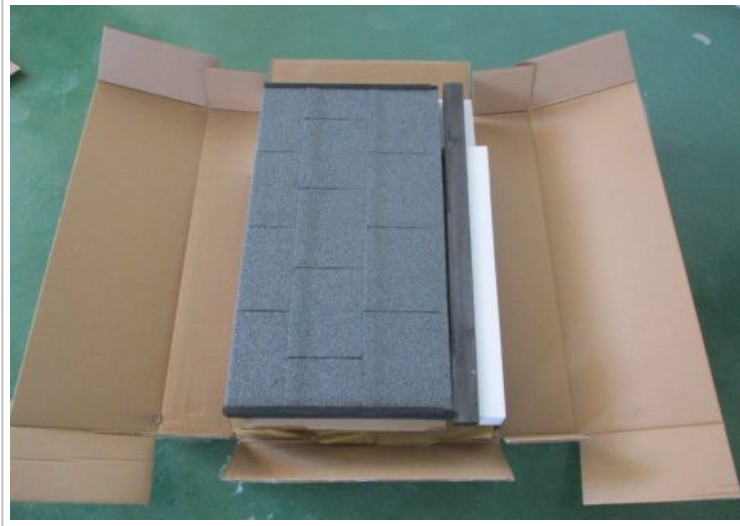
Shipping mark printed four sides



Marking details



Marking details



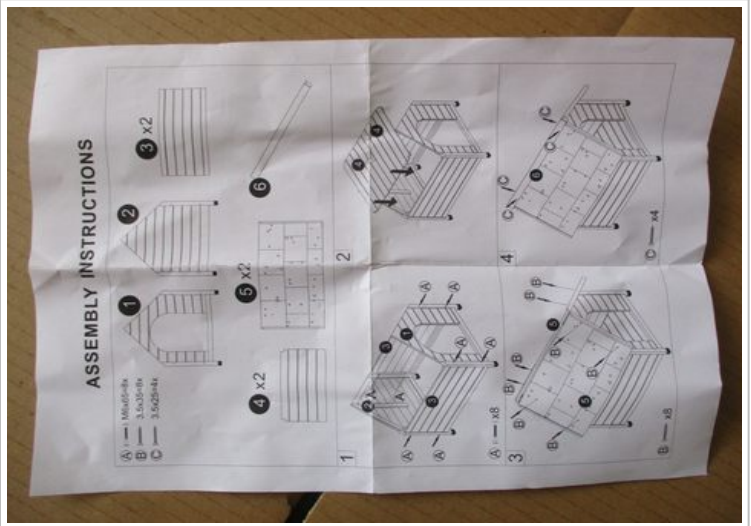
Open carton view



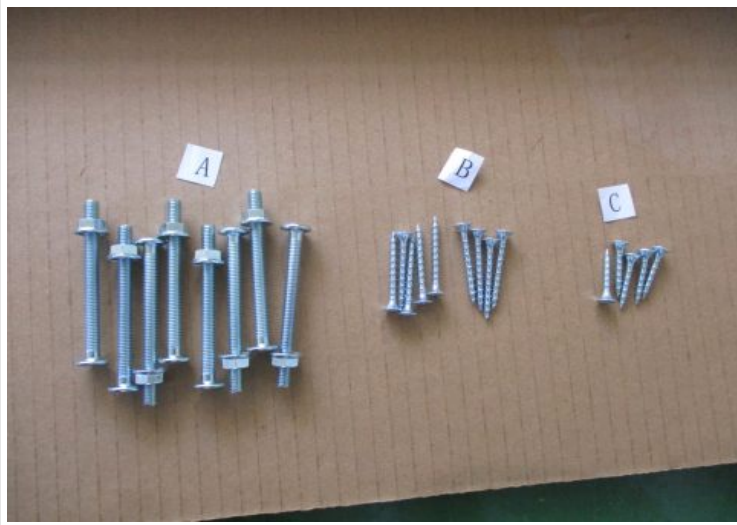
Product packaging



Set product



Instruction manual



Hardware pack



Product view



Brand plate



Product view



Product view



Product view



Product view



Product details view

For Item #DDP-2069L



Outer carton view



Outer carton view



Color label



Marking details



Marking details



Shipping mark printed four sides



Marking details



Barcode



Open carton view



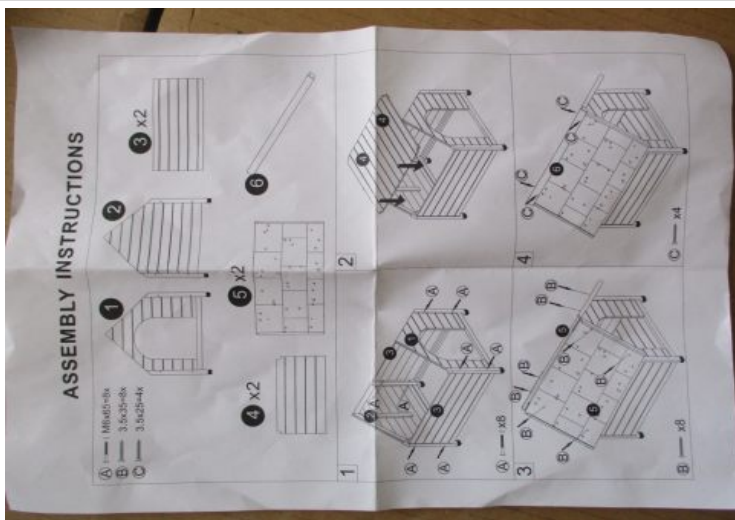
Product packaging



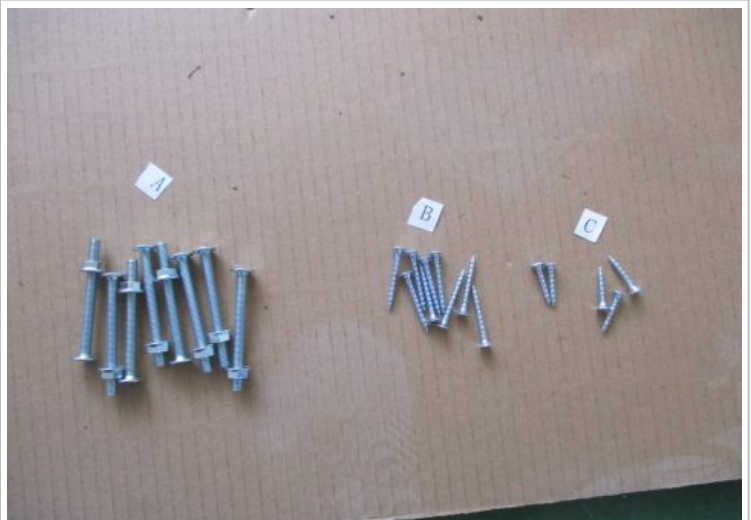
Product packaging



Set product



Instruction manual



Hardware pack



Product view



Brand plate



Product view



Product view



Product view



Product view

For Item #DDP-2069XL



Outer carton view



Outer carton view



Color label



Marking details



Marking details



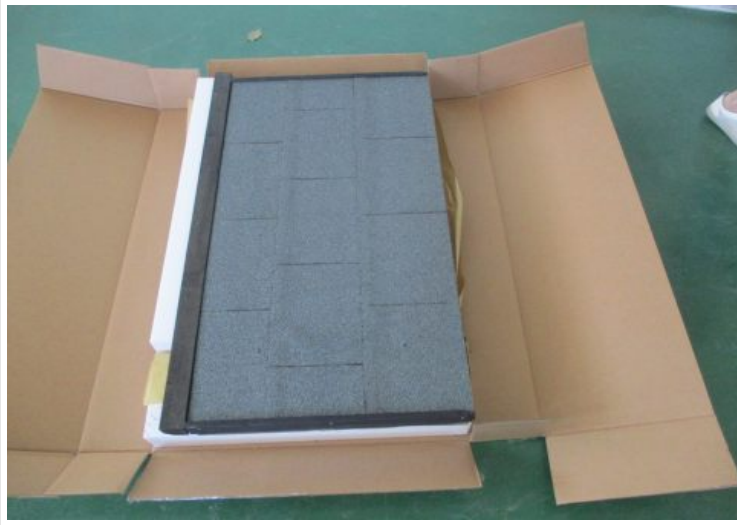
Shipping mark printed four sides



Marking details



Barcode



Open carton view



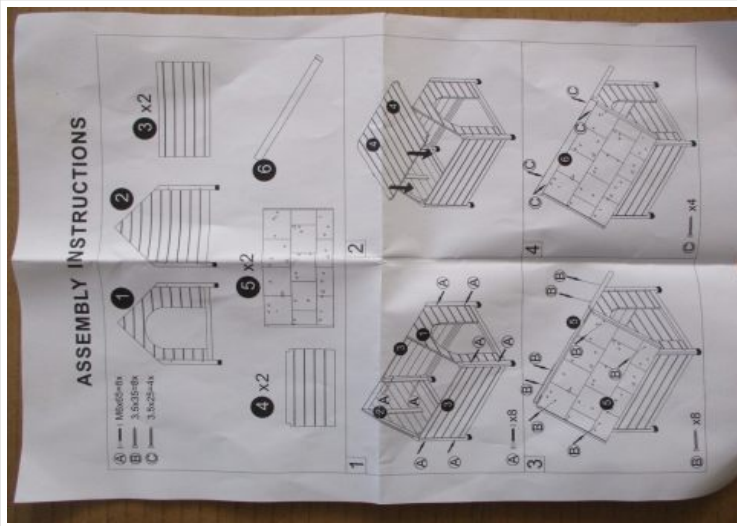
Product packaging



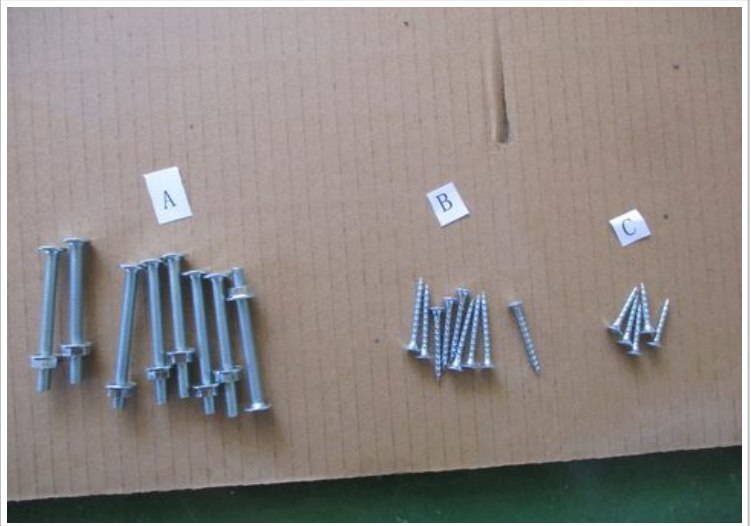
Product packaging



Set product



Instruction manual



Hardware pack



Product view



Brand plate



Product view



Product view



Product view



Product view

For Item #DDP-2069XXL



Outer carton view



Outer carton view



Color label



Marking details



Marking details



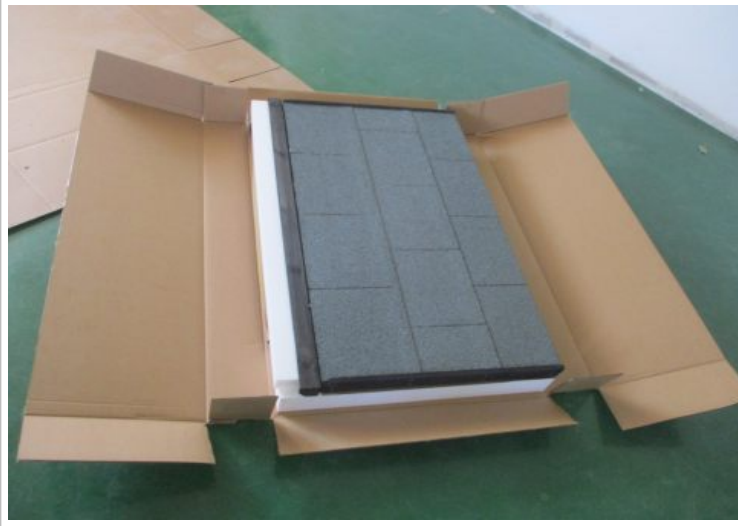
Shipping mark printed four sides



Marking details



Barcode



Open carton view



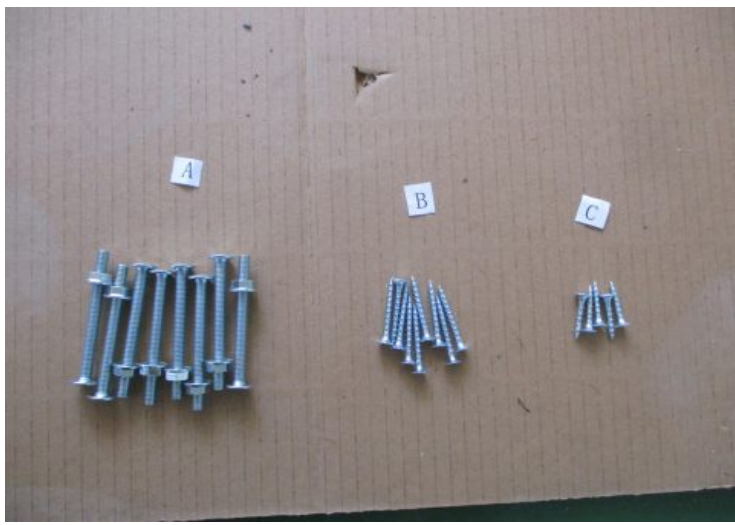
Product packaging



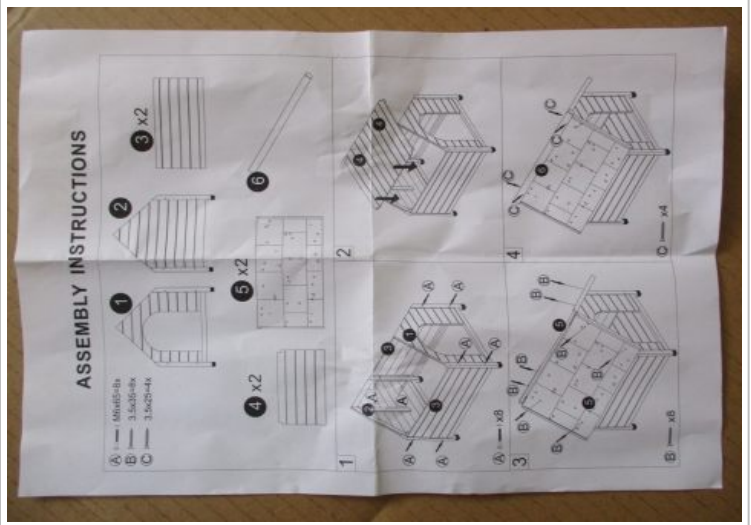
Product packaging



Set product



Hardware pack



Instruction manual



Product view



Brand plate



Product view



Product view



Product view



Product view

For Item #DDP-1345XS



Outer carton view



Outer carton view



Color label



Marking details



Marking details



Shipping mark printed four sides



Marking details



Barcode



Open carton view



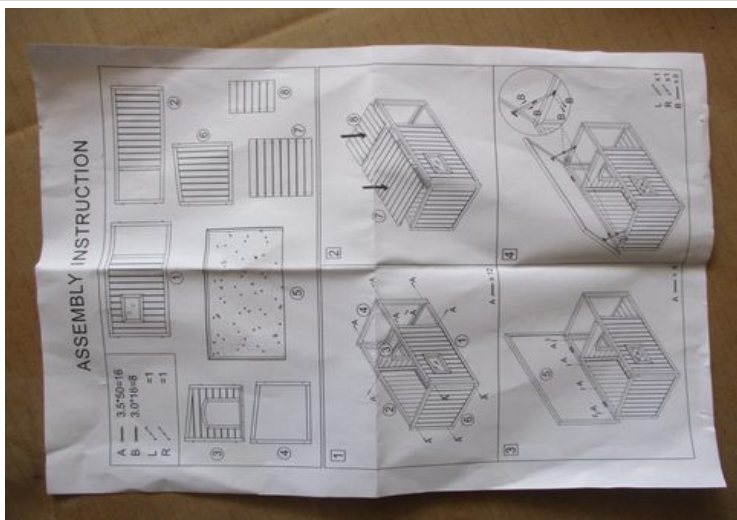
Product packaging



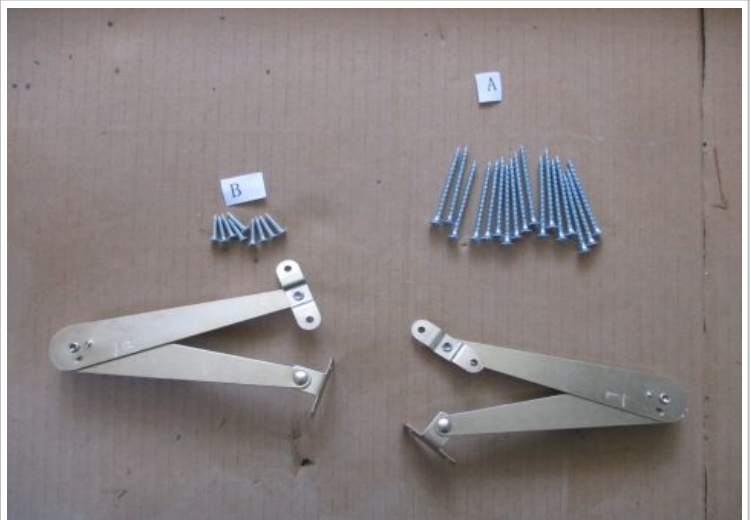
Product packaging



Set product



Instruction manual



Hardware pack



Product view



Product view



Brand plate



Product view



Product view



Product view



Product view



Product details view



Product view



Product view

For Item #DDP-1345S



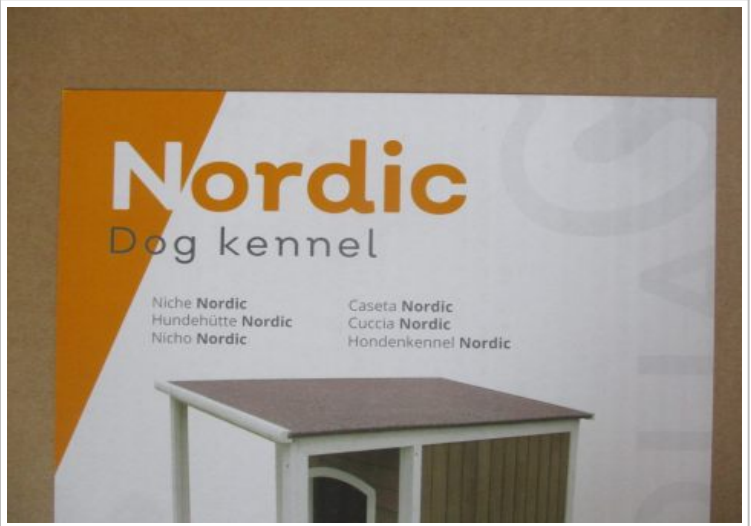
Outer carton view



Outer carton view



Color label



Marking details



Marking details



Shipping mark printed four sides



Marking details



Barcode



Open carton view



Product packaging



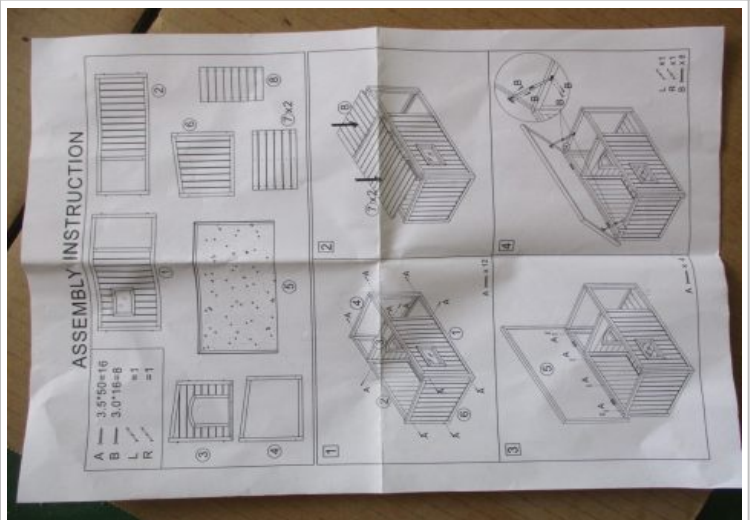
Product packaging



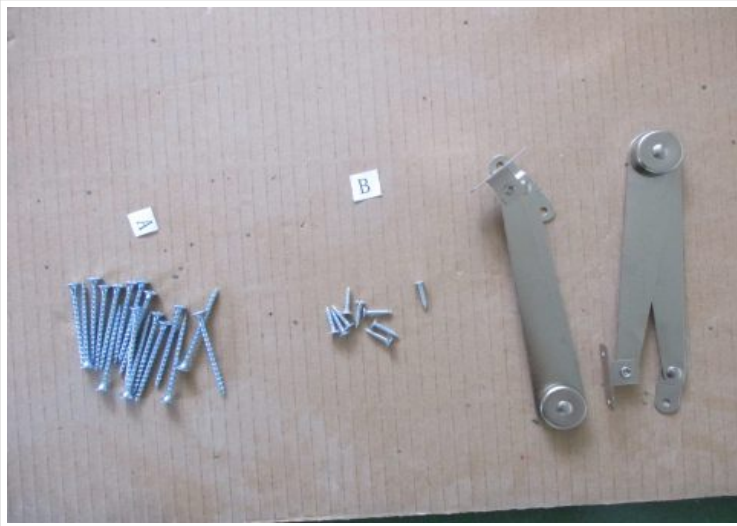
Product packaging



Set product



Instruction manual



Hardware pack



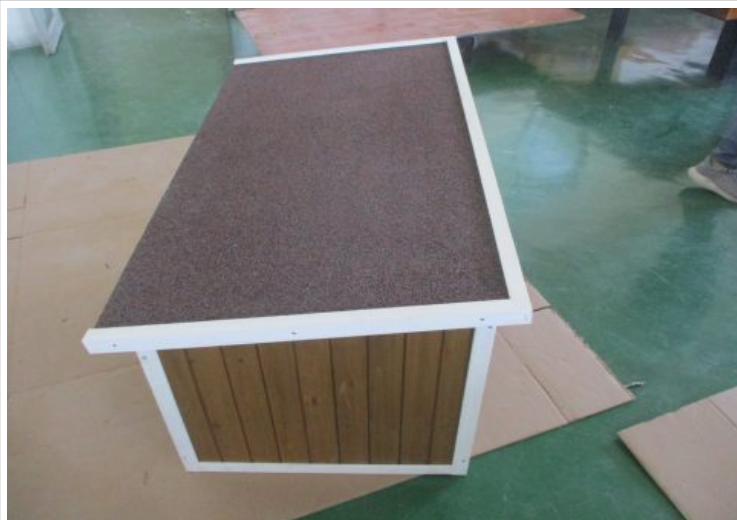
Product view



Product view



Brand plate



Product view



Product view



Product view



Product view



Product details view



Product view



Product view



Product view

For Item #DDP-1345M



Outer carton view



Shipping mark printed four sides



Marking details



Barcode



Color label



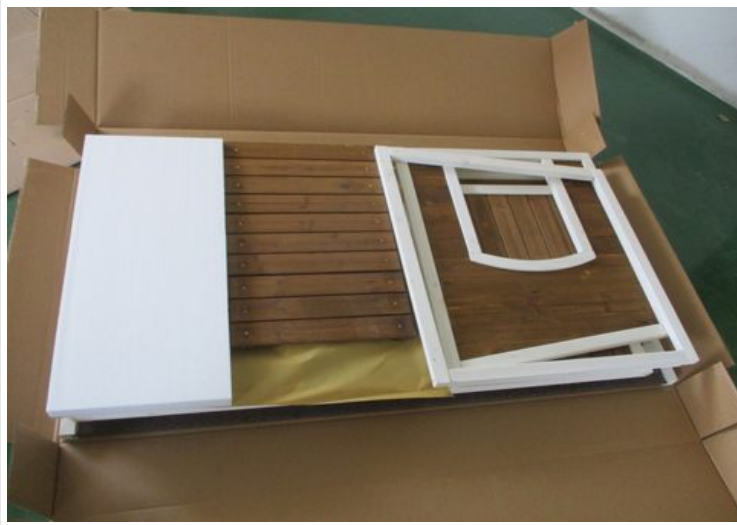
Marking details



Marking details



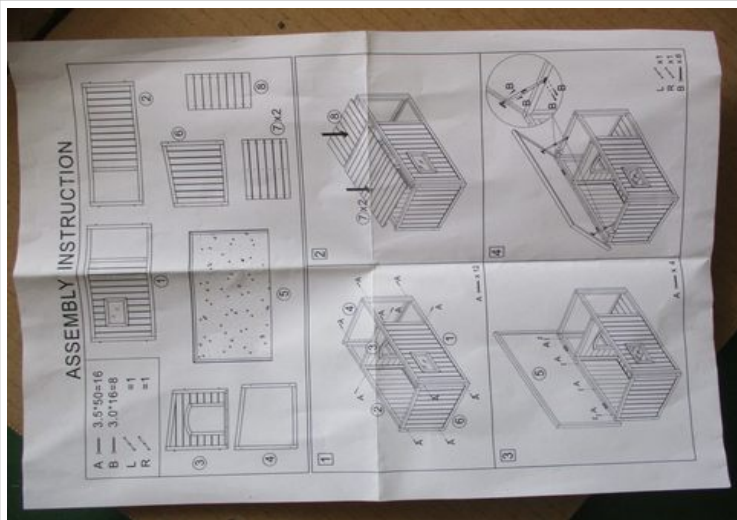
Open carton view



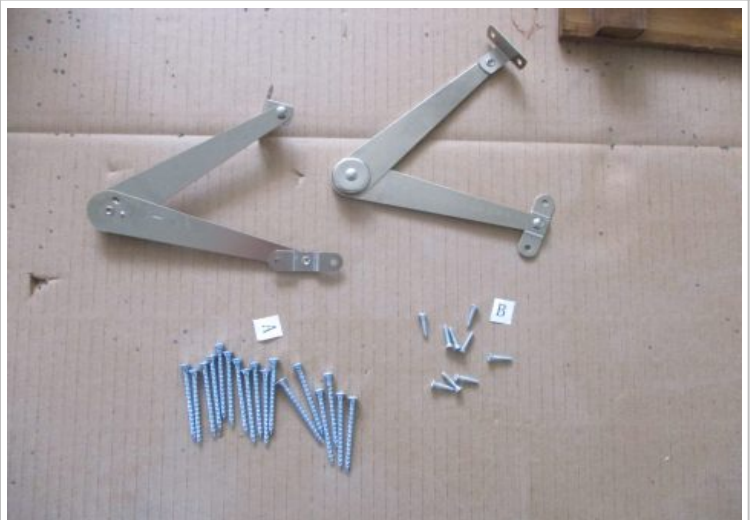
Product packaging



Set product



Instruction manual



Hardware pack



Product view



Product view



Brand plate



Product view



Product view



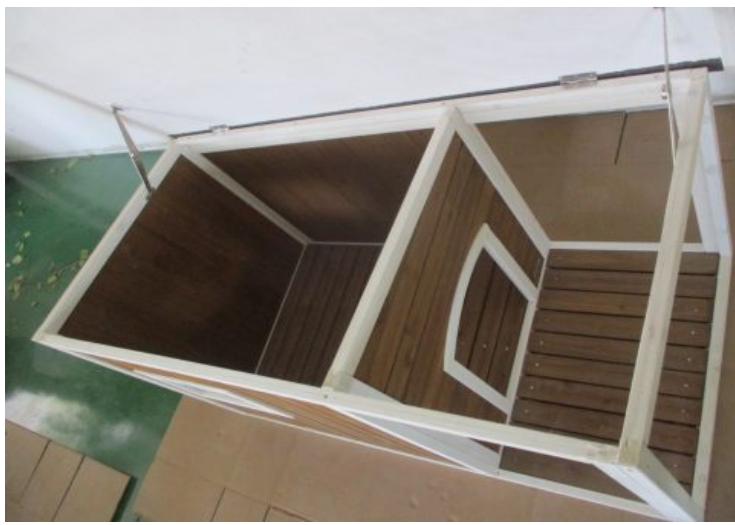
Product view



Product view



Product details view



Product view



Product view



Outer carton view



Outer carton view

For Item #DDP-1132S



Outer carton view



Outer carton view



Color label



Marking details



Marking details



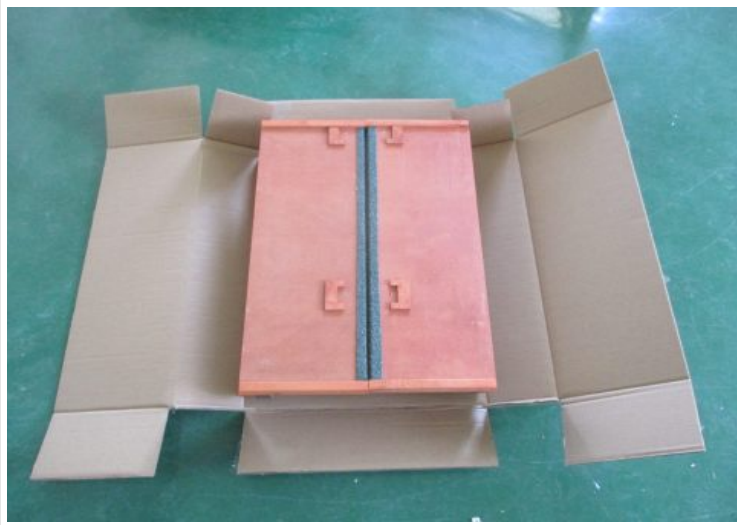
Shipping mark printed two sides



Marking details



Barcode



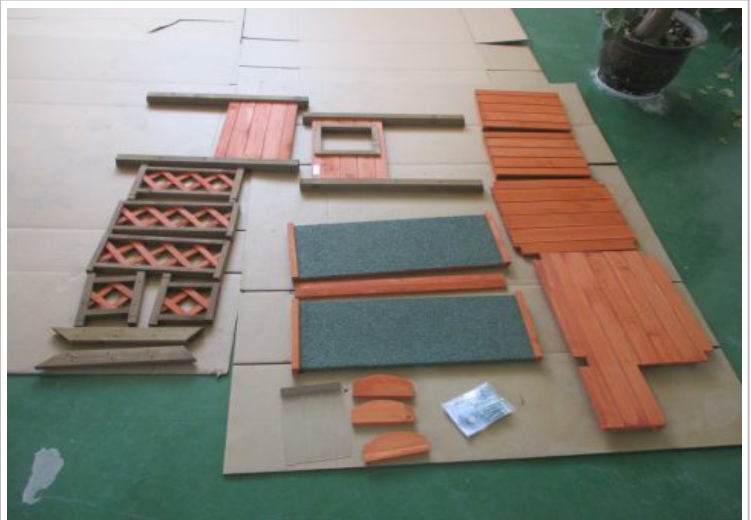
Open carton view



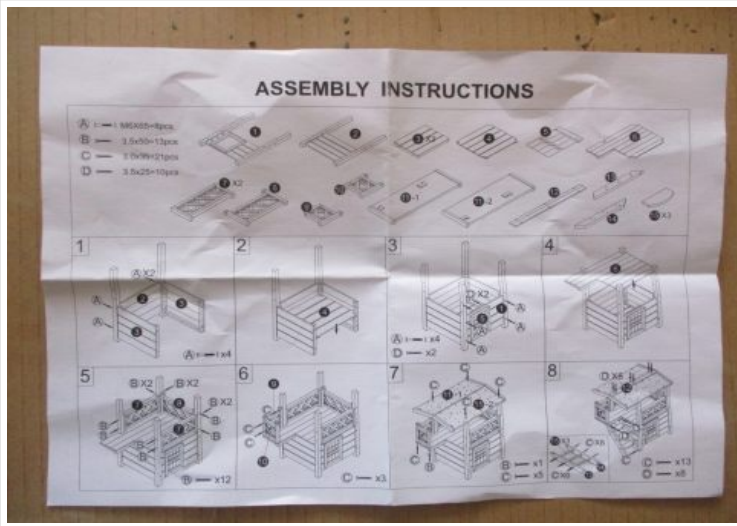
Product packaging



Product packaging



Set product



Instruction manual



Hardware pack



Product view



Brand plate



Product view



Product view



Product view



Product view

Test photo



Product assembly check



Product assembly check



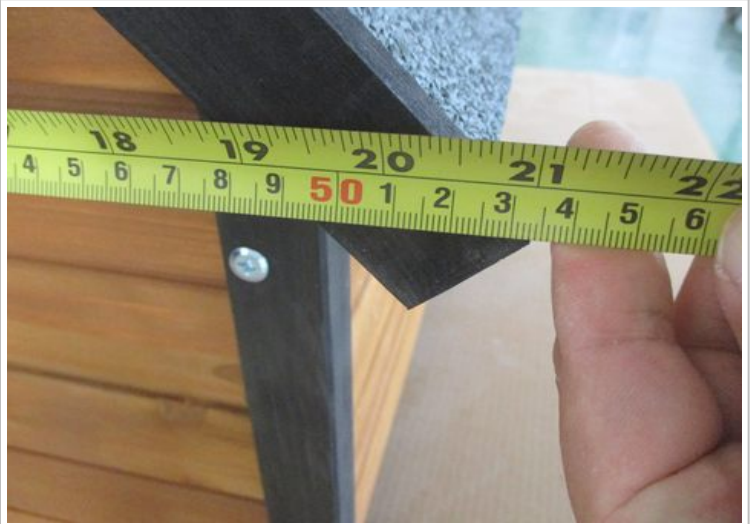
Product assembly check



Product assembly check



Product size check



Product size check



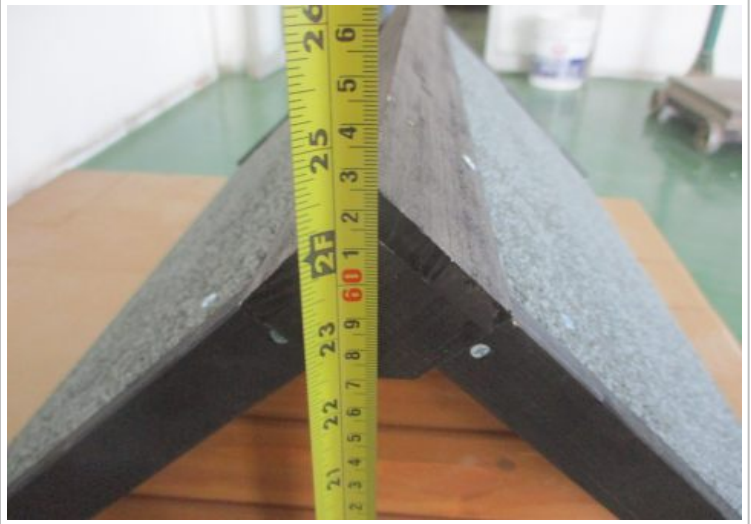
Product size check



Product size check



Product size check



Product size check



Product net weight check



Wood board thickness check



Moisture check



Wobble check



Stability check



Carton gross weight check



Carton size check



Carton size check



Carton size check



Carton size check



Carton size check



Barcode scanning check

Other Images Recorded During Inspection (Factory Gate,Storage,Packing List)



Factory entry



Factory name



Finished goods at warehouse



Finished goods at warehouse



Finished goods at warehouse



Finished goods at warehouse



Finished goods at warehouse



Finished goods at warehouse



Inspected samples



Inspected samples



Inspected samples



Inspected samples

J. Validation Team

Inspected By	TC650067	Inspection Date	2022-10-25
Reviewed By		Review Date	2022-10-26
Approved By		Approval Date	2022-10-26