

**INSPECTED ARTICLE(S)**



**A. GENERAL INFORMATION**

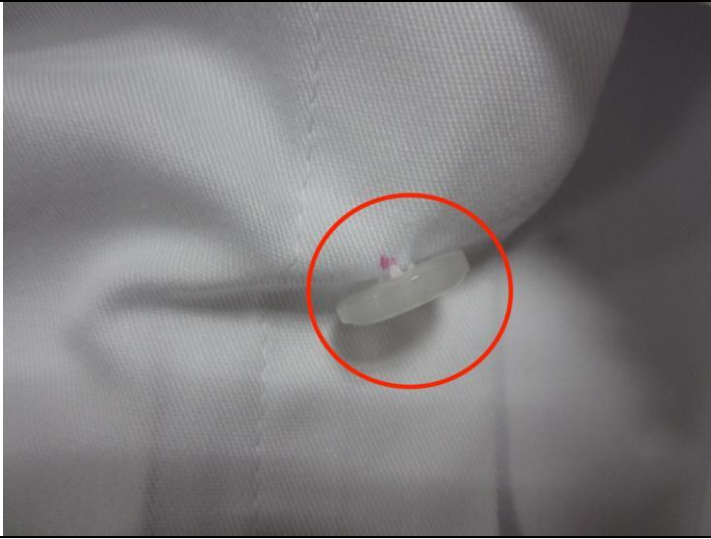


Client Name	N/A	P.O. Number	N/A
Vendor Name	N/A	Item Number	N/A
Inspection Date	N/A	Product Name	Shirt
Inspection Location	N/A	Booking/Shipment Total Quantity	6002pcs
Inspection Type	Final Random Inspection (FRI)	Combined Sampling	Yes
Inspection Material	<input type="checkbox"/> Approval Sample <input type="checkbox"/> Technical File <input checked="" type="checkbox"/> Product Spec <input checked="" type="checkbox"/> Packing List <input checked="" type="checkbox"/> P.O. <input type="checkbox"/> Other		

**B. INSPECTION RESULTS**

**OVERALL CONCLUSION** Not Conform, due to beyond AQL and remark 2,3,4,5

INSPECTION SUMMARY	Conform	Not Conform	Pending	Not Applicable	Remark
<u><a href="#">Critical Check Point</a></u> <small>(Details refer to section D)</small>		✓			4,5
<u><a href="#">Visual and Workmanship</a></u> <small>(Details refer to section E)</small>		✓			2,3
<u><a href="#">Quantity Conformity</a></u> <small>(Details refer to section F)</small>			✓		1
<u><a href="#">Product &amp; Product Package Conformity</a></u> <small>(Details refer to section C)</small>			✓		6,7,9,10
<u><a href="#">Data Measurement / Field Test</a></u> <small>(Details refer to section H)</small>			✓		8

**C1. PROBLEM REMARKS**

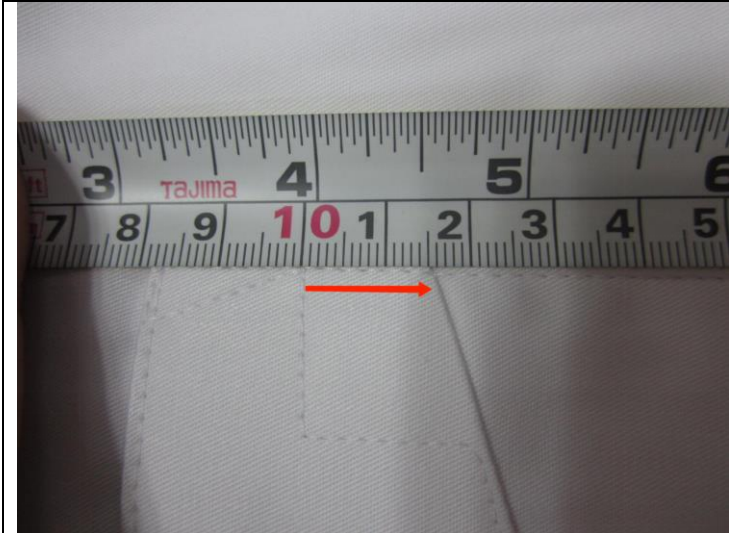
1	Actual found there were 8 items of products available for the inspection, 6 items for Men's, 2 items for Women's, and the PO numbers were 100114406,100114407,100114408 instead of 100114401,100114402,100114403, details please refer to the quantity sheet below.
2	For all items, 100% of inspected samples were found pen mark on placket which was judged as major defect.
	
3	For all items, 100% of inspected samples were found the spare button covers the text on care label which was judged as major defect.
	N/A
	N/A
4	For all items, 100% of inspected samples were found wrinkled at armhole.



wrinkled at armhole

wrinkled at armhole

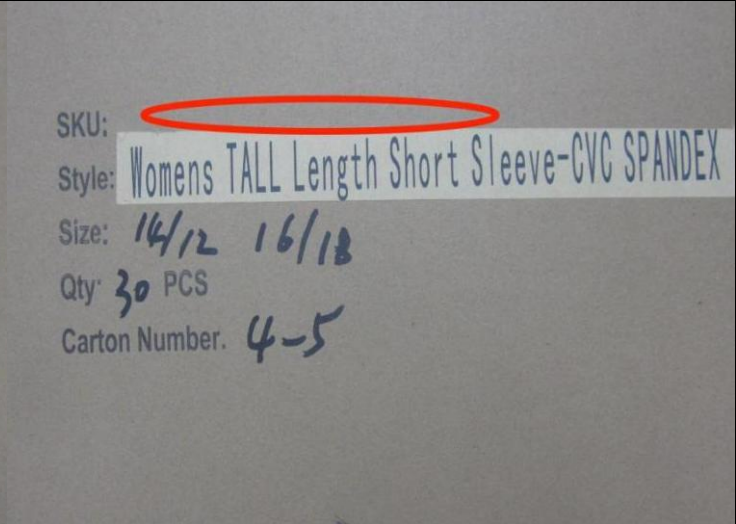
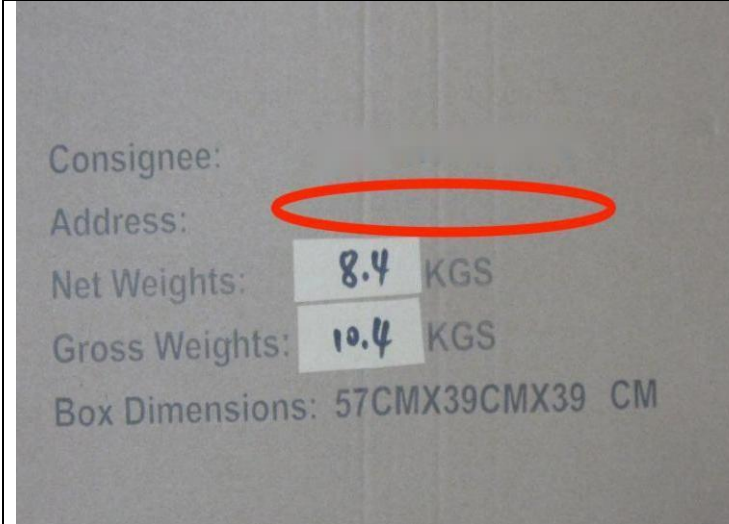
**5** For all items, found the badge clip size was 1.5x2cm instead of 2x2.5cm which was different from client's spec.



1.5cm

2cm

**6** For all items, no any information of SKU and address were marked on the shipping mark.



Carton front mark

Carton side mark

**7** For fabric weight check, actual found the weight (for item Men-Short Sleeve-Classic Fit-CVC and Men-Short Sleeve -Classic Fit TALL-CVC) was 130gsm instead of 155gsm which was different from client's spec, detail refer to the photo below.

**8** No approval sample/shipping mark/ packing information were provided for checking.

**9** No carton size /weight information provided for inspection, refer to actual finding.

**C2. INFORMATIVE REMARKS**

10	This inspection was not aimed at the measurement and inspection of product dimensions.
----	--

**D. Critical Check Point**

[Back To Summary](#)

Item#	Remark content	result
<b>All items</b>	Pockets must be at same level on both sides in the fold, and also, when open. VERY IMPORTANT. Tolerance 1/8" between pockets	Conform
	The Armhole seams and side seams use fusing tape (men's only) so they should be flat	Conform
	The shoulder seam and neck band seam should not have any puckering	Not Conform
	Bottom hem shape must be curved but smooth, no waviness or puckering	Conform
	The epaulettes on the shoulder must be in the same position on both shoulders, attachment position is ¼' down the front of the shoulder seam. The epaulettes on both shoulders in the same shirt must be exactly in the same position. THIS IS THE MOST IMPORTANT POINT AND ZERO TOLERANCE. Epaulette size must be correct to spec	Conform
	The left and right pocket flap corner to have badge clip seam 2 cm length at top/ 2cms height at narrow side and 2.5 cm height at longer side. This badge clip stitching should be facing the front placket on both pockets (not the side facing the armhole)	Not Conform
	The sticker side of the tag should be facing upwards and the information on the sticker should match the main label – example Modern Fit/ Slim Fit/Classic Fit and size	Conform

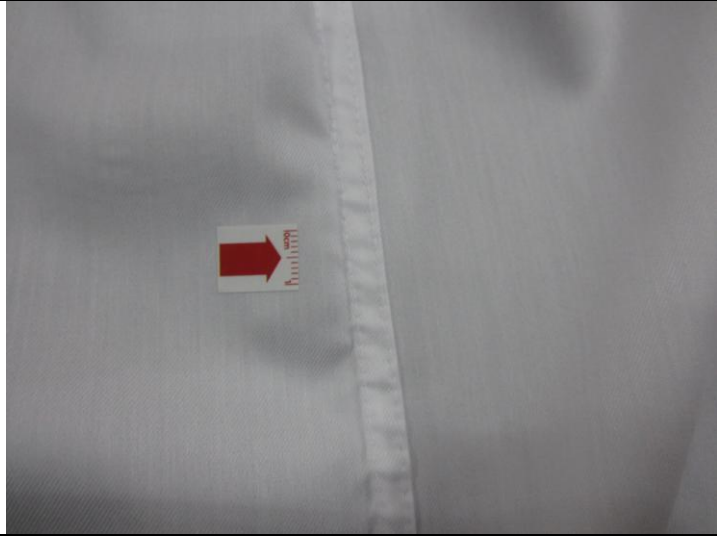
**E. Visual and Workmanship**

[Back To Summary](#)

Inspection Standard	ANSI/ASQ Z1.4 Single Sampling Plan		
Inspection Level	Level-II		
Defect Classification	Critical	Major	Minor
AQL	Not Allowed	2.5	4.0
Sample Size	200	200	200
Details of Defect Found	Critical	Major	Minor
<b>For item# Women – short Sleeve -CVC SPANDEX s/s:33</b>	-	-	-
Missing care label	0	1	0
Untrimmed thread on armhole	0	0	2
<b>For item# Men – Short Sleeve – Classic Fit-CVC s/s:21</b>	-	-	-
Wave mark on back	0	1	0
Dirty mark on neck	0	0	1
Untrimmed thread on pocket	0	0	1
<b>For item# Men – Short Sleeve -Classic Fit TALL-CVC s/s:10</b>			
Pleat on pocket	0	1	0
<b>For item# Men – Short Sleeve –Modern Fit-CVC SPANDEX s/s:55</b>	-	-	-
Untrimmed thread on hem	0	0	1
Dirty mark on front chest	0	0	1
Snagging on hem	0	1	0
Wave mark on hem	0	1	0
Untrimmed thread on armhole	0	0	3
<b>For item# Men – Short Sleeve –Slim Fit-CVC SPANDEX s/s:44</b>	-	-	-
Hole on armhole	0	1	0
Snagging on back	0	1	0
Untrimmed thread on pocket	0	0	1
Wave mark on back	0	2	0
<b>For item# Men – Short Sleeve -Modern Fit TALL-CVC SPANDEX s/s:21</b>	-	-	-
Wave mark on hem	0	1	0
Untrimmed thread on pocket	0	0	1
<b>For item# Men – Short Sleeve -Slim Fit TALL-CVC SPANDEX s/s:10</b>	-	-	-
Dirty mark on front pocket	0	0	1
Wave mark on back	0	1	0
<b>For item# Men – Short Sleeve -Slim Fit TALL-CVC SPANDEX s/s:6</b>	-	-	-
No defect found			
<b>Total</b>	0	11	12
<b>Allowed</b>	0	10	14
<b>Result</b>	<b>Beyond AQL</b>		

Note: You directed that your inspection be based upon Combined sampling, Testcoo advises all clients of the risks associated with "Combined Sampling" where several different product styles are combined to make a single lot size. Combined Sampling represents an increased level of risk to you as statistical rules are compromised and the chances of missing quality issues are much greater than during single style sampling. We disclaim any liability to you if you make decisions concerning the acceptance, payment authorization, or shipment of the inspected goods based upon Combined Sampling.

**For Item# Women – short Sleeve -CVC SPANDEX**



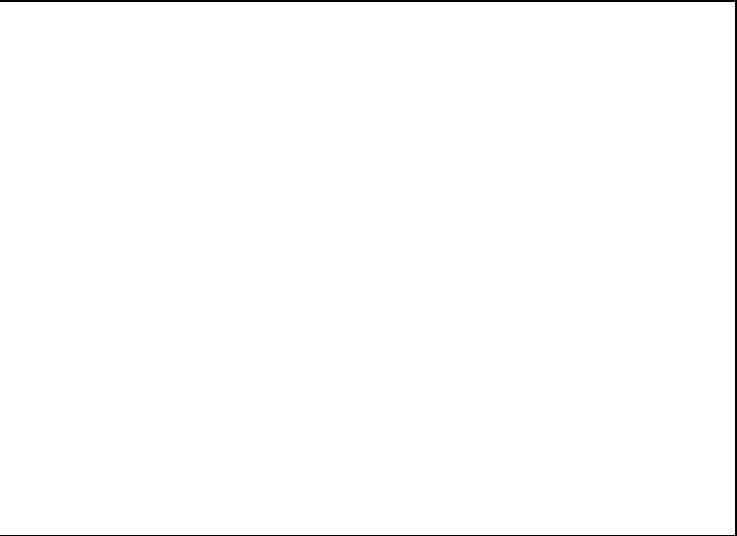
Missing care label-maj



Untrimmed thread on armhole-min



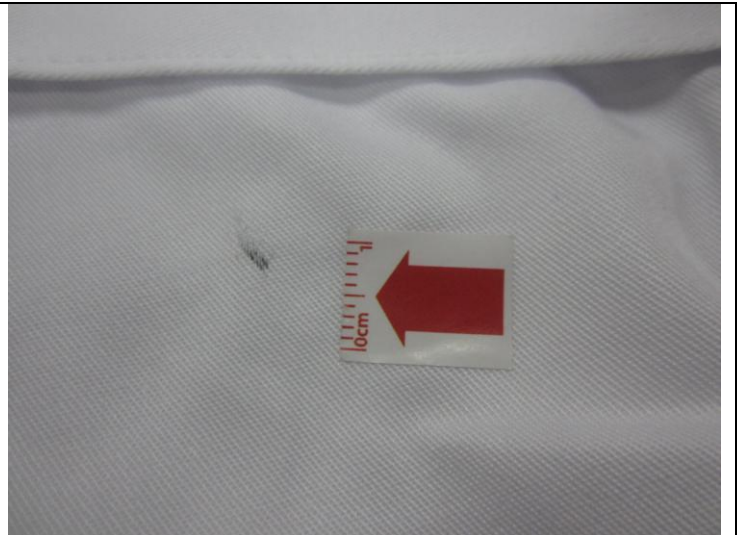
Untrimmed thread on armhole-min



**For Item# Men – Short Sleeve – Classic Fit-CVC**



Wave mark on back-maj



Dirty mark on neck-min



Untrimmed thread on pocket-min

**For Item# Men – Short Sleeve -Classic Fit TALL-CVC**

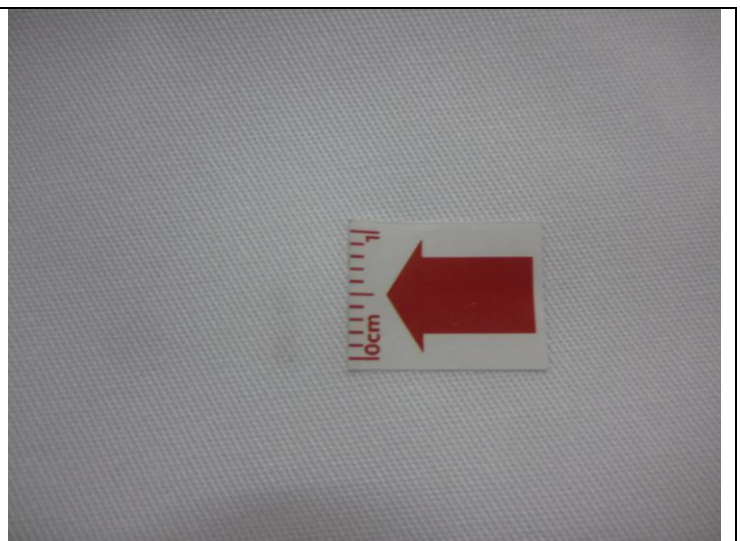


Pleat on pocket-maj

**For Item# Men – Short Sleeve –Modern Fit-CVC SPANDEX**



Untrimmed thread on hem-min



Dirty mark on front chest-min



Snagging on hem-maj



Wave mark on hem-maj



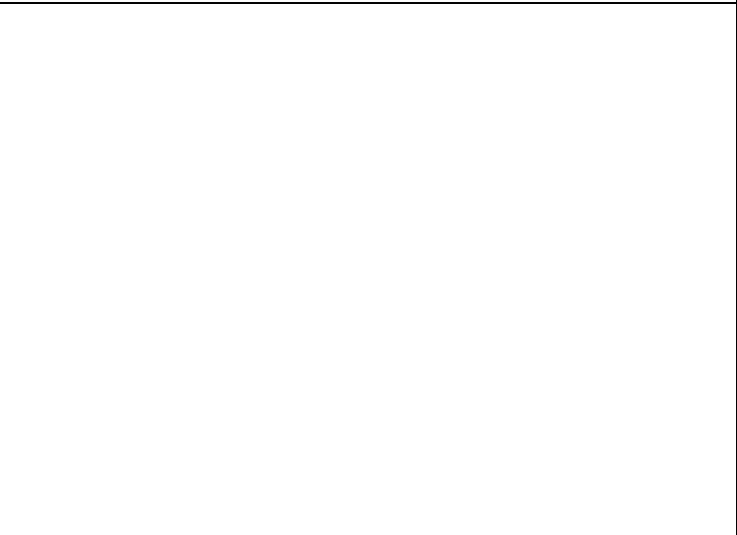
Untrimmed thread on armhole-min



Untrimmed thread on armhole-min



Untrimmed thread on armhole-min

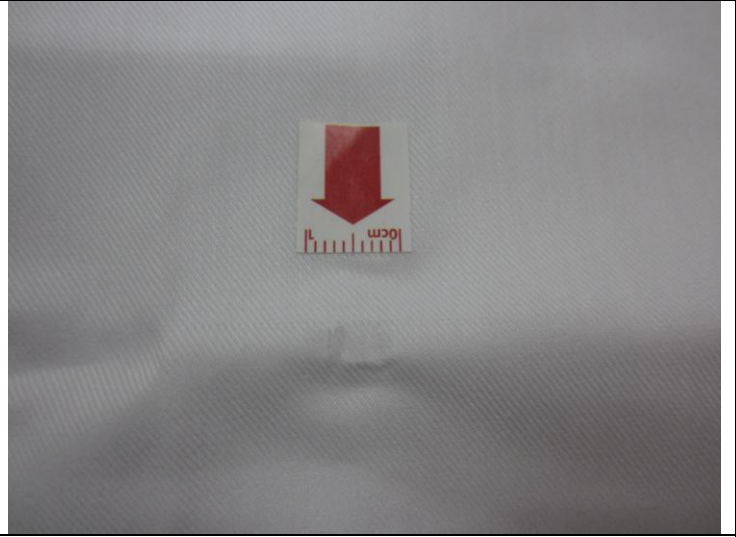


**For Item# Men – Short Sleeve –Slim Fit-CVC SPANDEX**





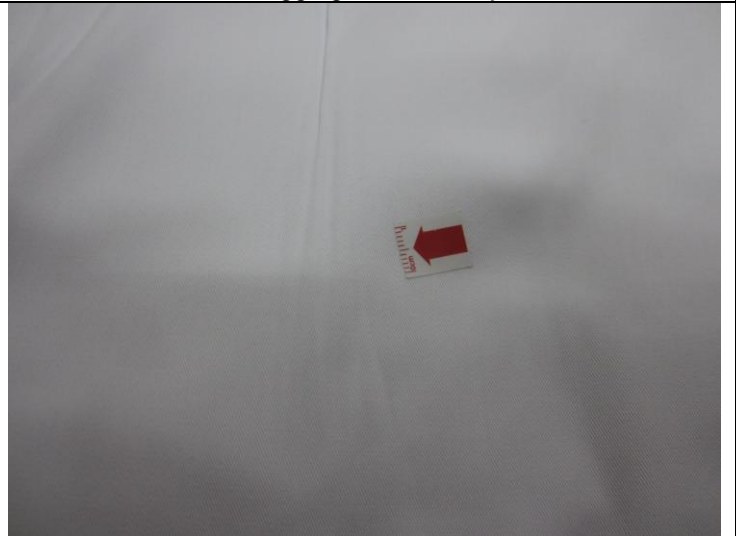
Hole on armhole-maj



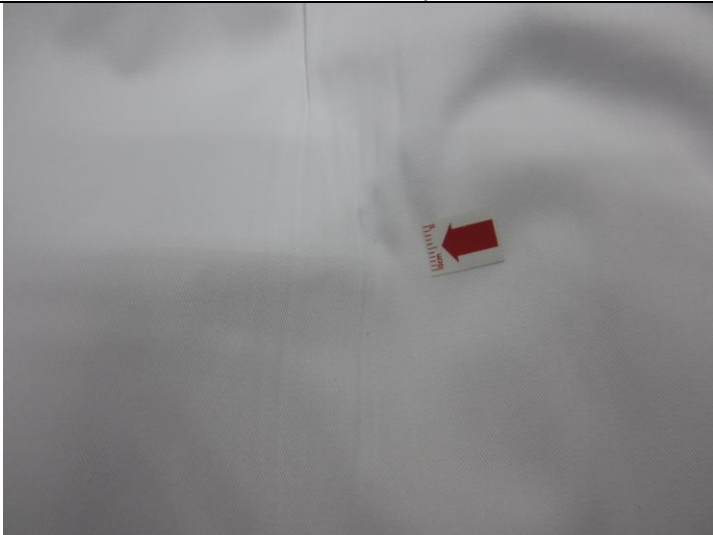
Snagging on back-maj



Untrimmed thread on pocket-min



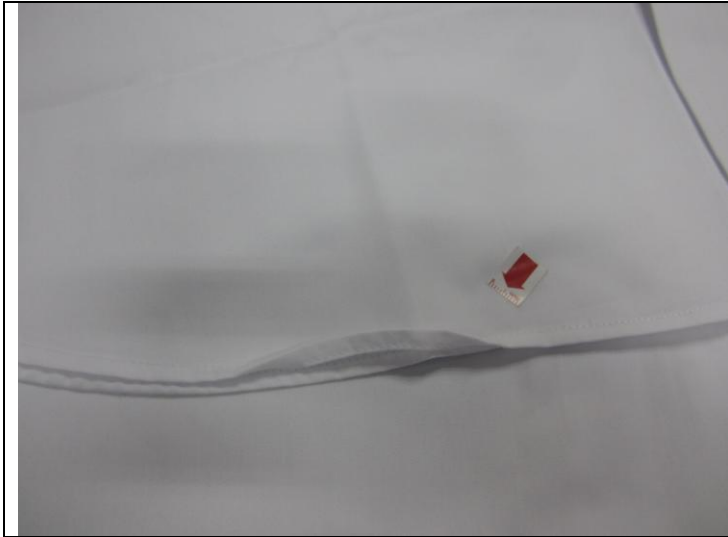
Wave mark on back-maj



Wave mark on back-maj



For Item# Men – Short Sleeve -Modern Fit TALL-CVC SPANDEX



Wave mark on hem-maj



Untrimmed thread on pocket-min

For Item# Men – Short Sleeve -Slim Fit TALL-CVC SPANDEX



Dirty mark on front pocket-min



Wave mark on back-maj

**F. Quantity Conformity**

[Back To Summary](#)

Item Number	P.O. No	Order Quantity (pieces/sets)	Shipment Qty (pieces/sets)	Presented Qty			QTY Not Finished (pieces/sets)
				Packed Qty (pieces/sets)	Packed Cartons(cartons)	Units Finished Not Packed(pieces/sets)	
Women – short Sleeve -CVC SPANDEX	PO 100114408	1002	1002	1002	34	0	0
Women's TALL Length Short Sleeve-CVC SPANDEX0	PO 100114408	150	150	150	5	0	0
Men – Short Sleeve – Classic Fit-CVC	PO100114406	624	624	624	21	0	0
Men – Short Sleeve -Classic Fit TALL-CVC	PO100114406	306	306	306	11	0	0
Men – Short Sleeve	PO100114407	1626	1626	1626	55	0	0

-Modern Fit-CVC SPANDEX							
Men – Short Sleeve –Slim Fit-CVC SPANDEX	PO100114407	1304	1304	1304	44	0	0
Men – Short Sleeve -Modern Fit TALL-CVC SPANDEX	PO100114407	630	630	630	21	0	0
Men – Short Sleeve -Slim Fit TALL-CVC SPANDEX	PO100114407	360	360	360	12	0	0
<b>Total</b>		<b>6002</b>	<b>6002</b>	<b>6002</b>	<b>203</b>	<b>0</b>	<b>0</b>

Total 15 cartons were selected randomly  
Selected carton number:

Women – short Sleeve -CVC SPANDEX	11, 19
Women’s TALL Length Short Sleeve-CVC SPANDEX0	4
Men – Short Sleeve – Classic Fit-CVC	18, 13
Men – Short Sleeve -Classic Fit TALL-CVC	10, 3
Men – Short Sleeve – Modern Fit-CVC SPANDEX	1, 39
Men – Short Sleeve – Slim Fit-CVC SPANDEX	42, 25
Men – Short Sleeve -Modern Fit TALL-CVC SPANDEX	7, 18
Men – Short Sleeve -Slim Fit TALL-CVC SPANDEX	7, 11

**G. Product and Package Against Approval Sample/Documents**

[Back To Summary](#)

Inspection Reference	Contract			
Check point	Conform	Not Conform	Pending	Not Applicable
Product Appearance			✓	
Accessories	✓			
Packing	✓			
Labeling / Marking	✓			

**Packing method**

[Back To Summary](#)

<b>For Item #66539</b>	
<b>Unit Package</b>	Package: Polybag
<b>Inner Packing</b>	Quantity: 50 Package: Polybag
<b>Outer Packing</b>	Quantity: 200 Package: Export Carton
	Length: 45.5cm Width: 40.5cm Height: 28cm Weight: 12.9kg
	Remark: 5-ply
<b>For Item #G00137</b>	
<b>Unit Package</b>	Package: White box
	Remark: 3-ply
<b>Inner Packing</b>	Quantity: N/A Package: Not Applicable
<b>Outer Packing</b>	Quantity: 20 Package: Export Carton
	Length: 32cm Width: 32cm Height: 23cm Weight: 21.25kg
	Remark: 5-ply

## H. Data Measurement / Field Test

[Back To Summary](#)

	Test Item	Test Requirement	Actual Finding	Sample Size	Test Result
H1.	Carton Size and Weight Check	Conformance per Spec. and printed information If no specified tolerance, follow +/- 5%	Refer to below chart	1 carton/ style	Conform
H2.	Carton Assortment and Quantity Check	Actual packing quantity/color/size/style assortment conforms to printed information.	No failure	All selected cartons	Conform
H3.	Reliability test for button/snap or any other functional component	Open and close the tested component back and forth 20 times, the component should be remain good as it's after the test	No failure	2pcs/style	Conform
H4.	Metal detection	No broken needle or metal should be detected	No failure	All sample size	Conform
H5.	GSM test per fabric type (not applicable for Sweater / cardigan or any other woolen product)	According to client's specification. Apply +/- 3% tolerance if no detail tolerance issued or requirement from client	See remark	1pc /style	Pending
H6.	Fitting check	The product should be fit the intended model or person well	No failure	2pcs/style	Conform
H7.	Color shading check	Grade 4 of grey scale required for color shading	No failure	All sample size	Conform
H8.	Smell Test	No unwanted bad or irritative smell.	No failure	All samples	Conform

## Measurement chart

[Back To Summary](#)

Item No.	Carton size(cm) spec	Carton size(cm) actually	Carton weight(kg) spec	Carton weight(kg) actually	Fabric weight(gsm) spec	Fabric weight(gsm) Actually
Women – short Sleeve -CVC SPANDEX	57X39X39	57X40X39	9.5	9.25	155	159
Women's TALL Length Short Sleeve-CVC SPANDEX	57X39X39	57X39.5X40	10.4	10.4	155	159
Men – Short Sleeve – Classic Fit-CVC	63X41.5X45	63X42.5X45.5	14.5	14.5	155	130
Men – Short Sleeve -Classic Fit TALL-CVC	63X41.5X45	63.5X42X45	12	12.1	155	130
Men – Short Sleeve –Modern Fit-CVC SPANDEX	63X41.5X45	63X42.5X46	9.6	9.6	155	159
Men – Short Sleeve –Slim Fit-CVC SPANDEX	63X41.5X45	63X42X44.5	10	10.1	155	159
Men – Short Sleeve -Modern Fit TALL-CVC SPANDEX	63X41.5X45	63.5X52X45.5	12.4	12.3	155	159
Men – Short Sleeve -Slim Fit TALL-CVC SPANDEX	63X41.5X45	64X42X46	12.6	12.8	155	159

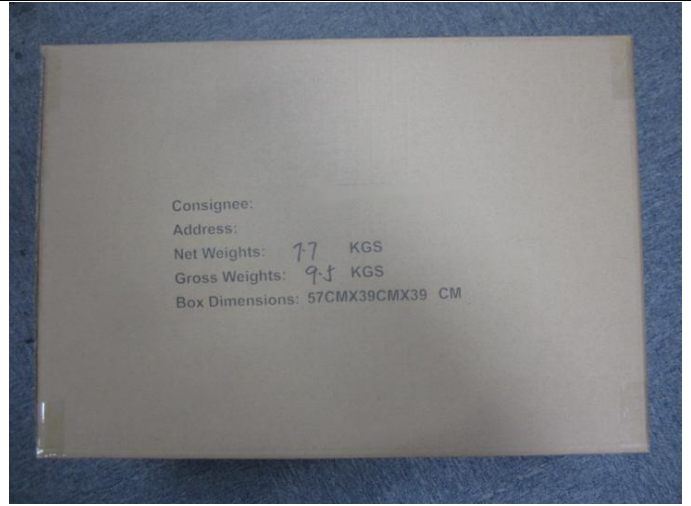
## VALIDATION TEAM

Inspected by Inspection date	N/A
Reviewed by Review date	N/A
Approved by Review date	N/A

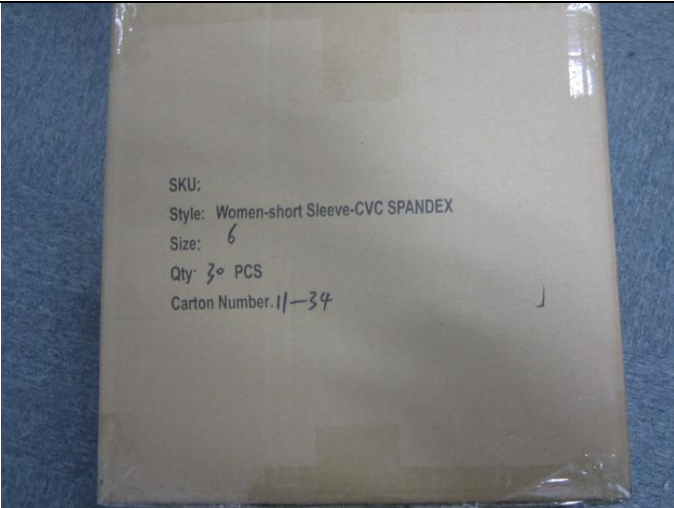
1 Women – short Sleeve -CVC SPANDEX



IMG\_1001 Export carton view



IMG\_1002 Export carton view



IMG\_1003 Export carton view



IMG\_1004 Export carton view



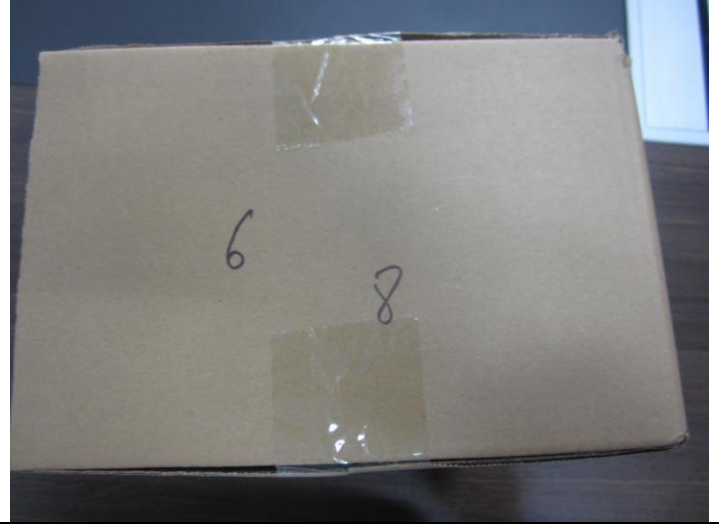
IMG\_1005 5-plys



IMG\_1006 4 inner cartons per carton



IMG\_1007 Inner carton view



IMG\_1008 Inner carton view



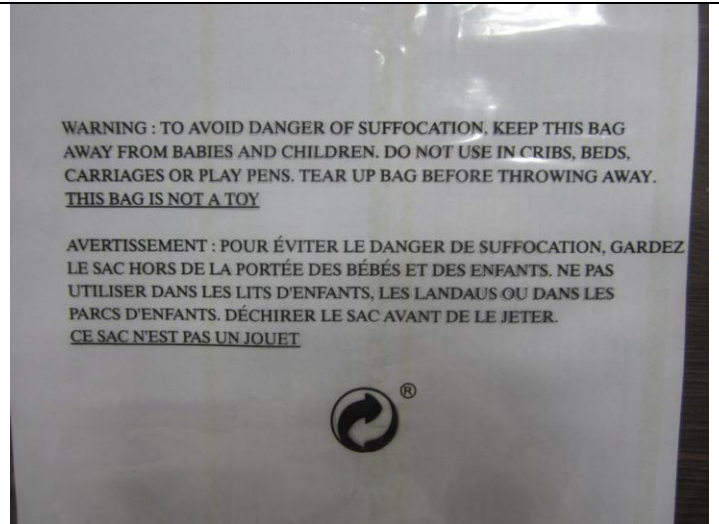
IMG\_1009



IMG\_1010 Unit packing view



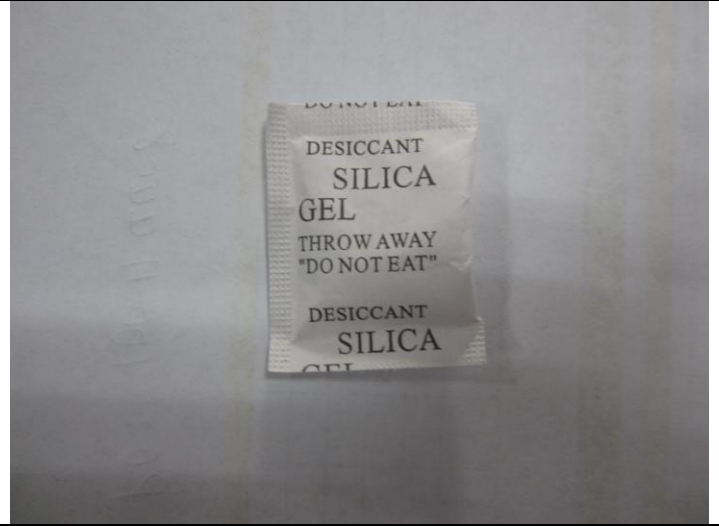
IMG\_1011 Unit packing view



IMG\_1012 Warning



IMG\_1013 Air hole



IMG\_1014 Silicate gel



IMG\_1015 Unit packing view



IMG\_1016 Unit packing view



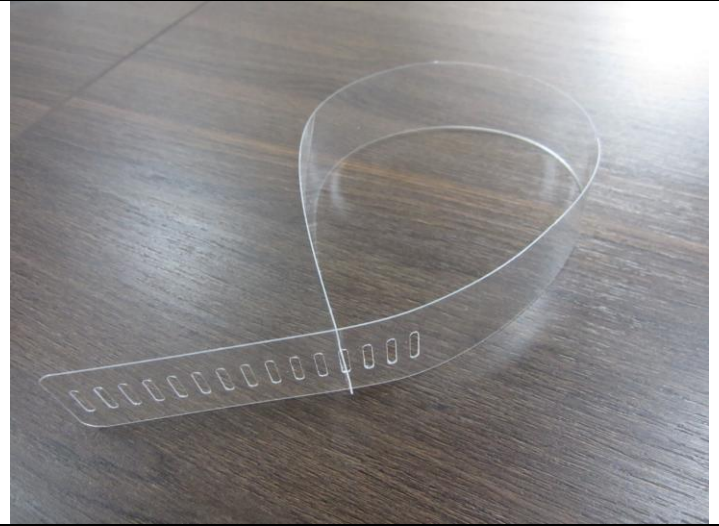
IMG\_1017 Unit packing view



IMG\_1018 Unit packing view



IMG\_1019 Unit packing view



IMG\_1020 Unit packing view



IMG\_1021 Unit packing view



IMG\_1022 Unit packing view



IMG\_1023 Unit packing view



IMG\_1024 Product view





IMG\_1025 Product view



IMG\_1026 Product view



IMG\_1027 Product view



IMG\_1028 Product view



IMG\_1029 Product view



IMG\_1030 Product view



IMG\_1031 Product view



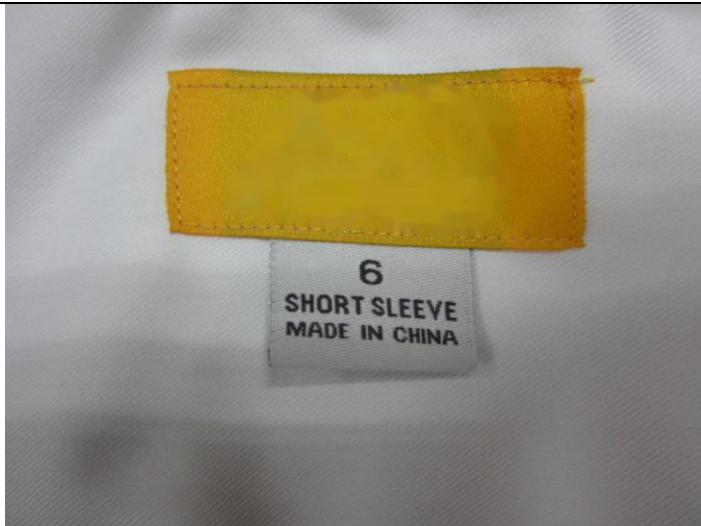
IMG\_1032 Product view



IMG\_1033 Product view



IMG\_1035 Product view



IMG\_1036 Product view



IMG\_1037 Product view



IMG\_1038 Product view

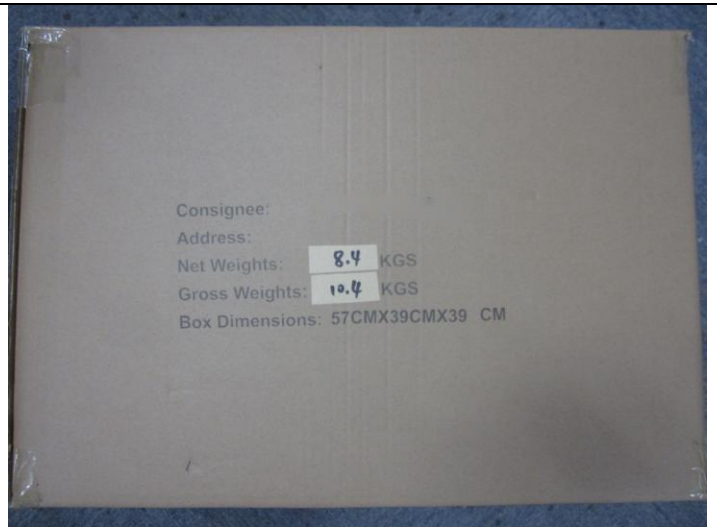


IMG\_1039 Product view

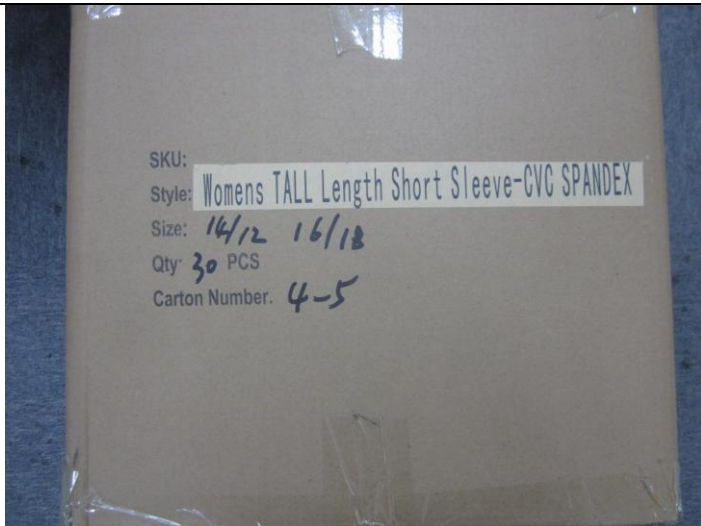
2 Women – short Sleeve -CVC SPANDEX



IMG\_1040 Export carton view



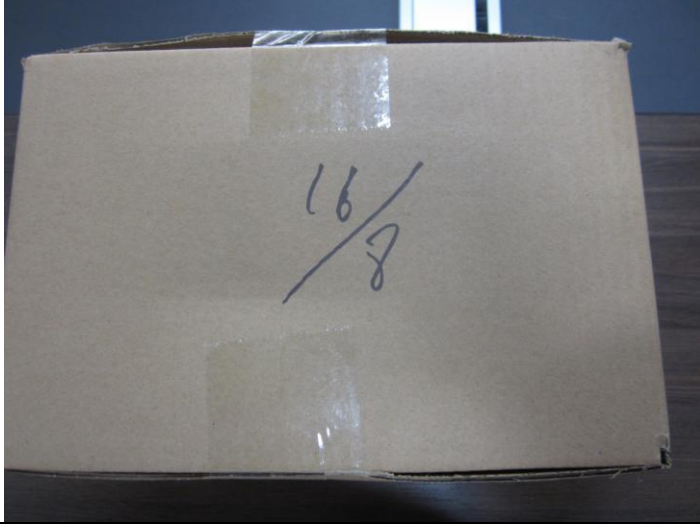
IMG\_1041 Export carton view



IMG\_1042 Export carton view



IMG\_1044 Inner carton view



IMG\_1045 Inner carton view



IMG\_1046 Unit packing view



IMG\_1047 Unit packing view



IMG\_1048 Product view



IMG\_1049 Product view



IMG\_1050 Product view



IMG\_1051 Product view



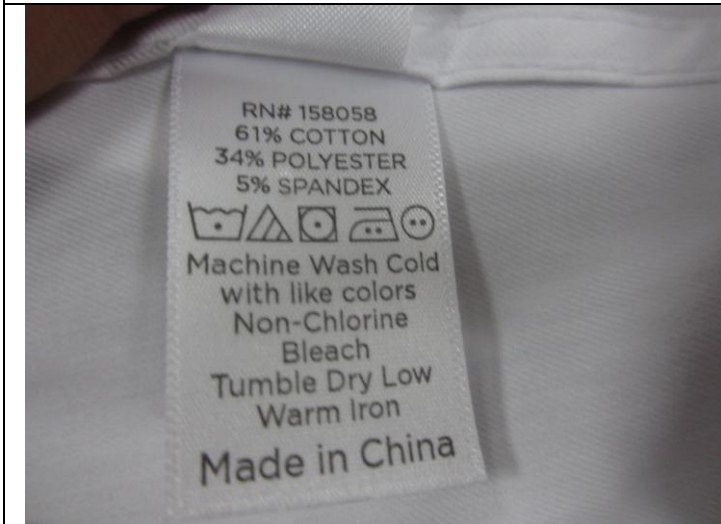
IMG\_1052 Product view



IMG\_1053 Product view



IMG\_1054 Product view



IMG\_1055 Product view



IMG\_1056 Product view



IMG\_1057 Product view



IMG\_1058 Product view



IMG\_1059 Product view



IMG\_1060 Product view



IMG\_1061 Product view

N/A

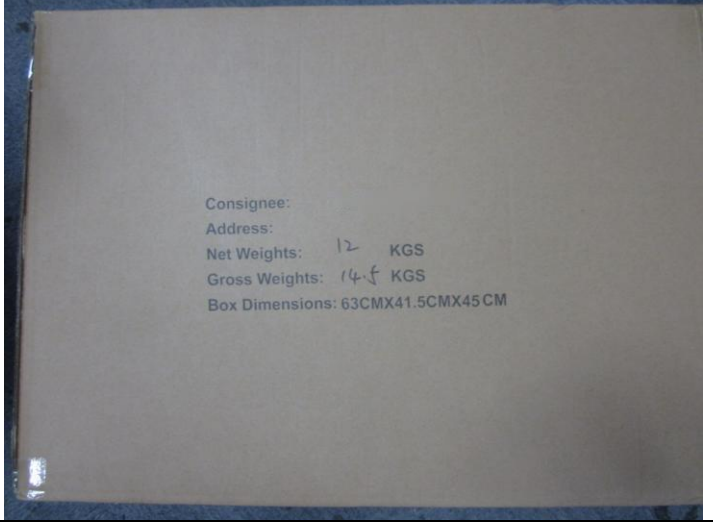
N/A

N/A

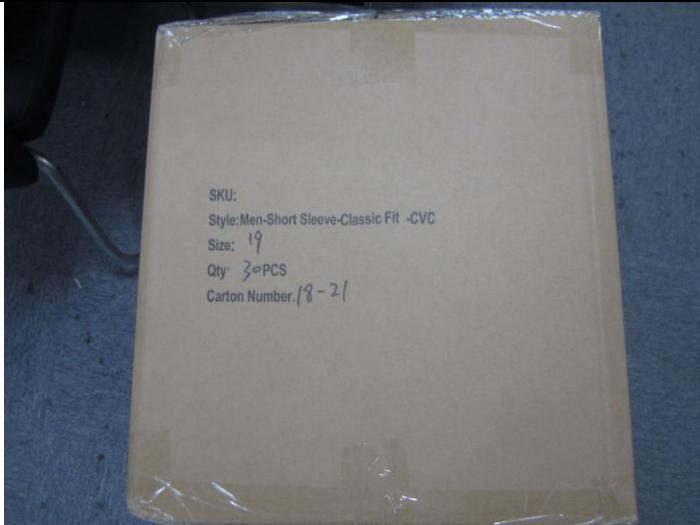
3 Men – Short Sleeve – Classic Fit-CVC



IMG\_1062 Export carton view



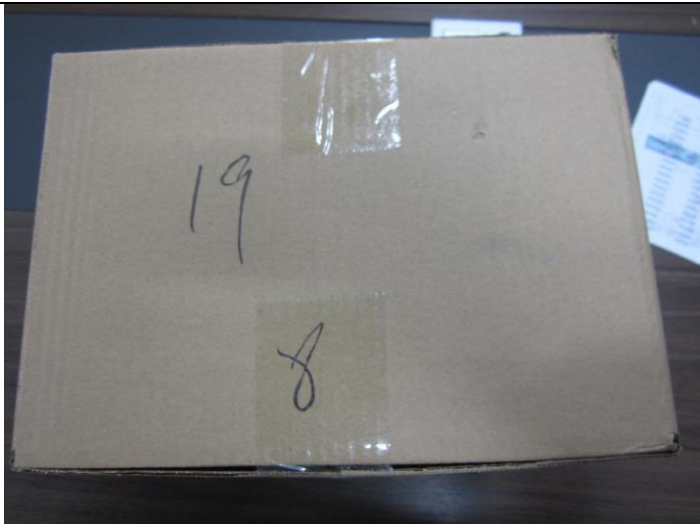
IMG\_1063 Export carton view



IMG\_1064 Export carton view



IMG\_1065 Inner carton view



IMG\_1066 Inner carton view



IMG\_1068 Unit packing view



IMG\_1069 Unit packing view



IMG\_1070 Product view



IMG\_1071 Product view



IMG\_1072 Product view



IMG\_1073 Product view



IMG\_1074 Product view





IMG\_1075 Product view



IMG\_1076 Product view



IMG\_1077 Product view



IMG\_1078 Product view



IMG\_1079 Product view



IMG\_1080 Product view



IMG\_1081 Product view

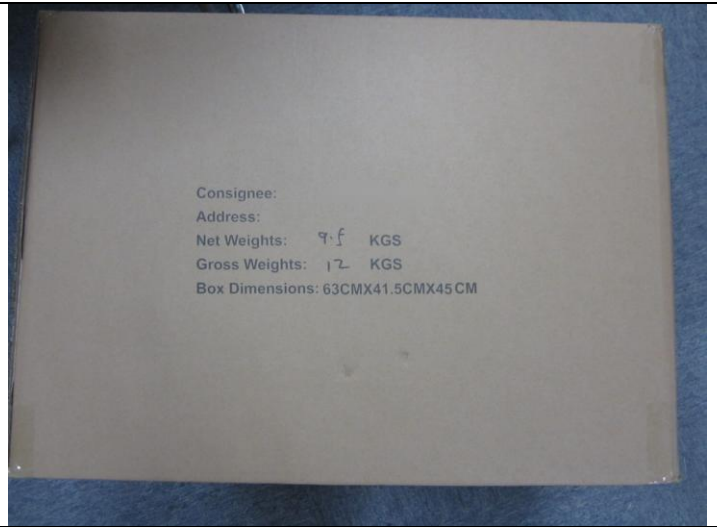


IMG\_1082 Product view

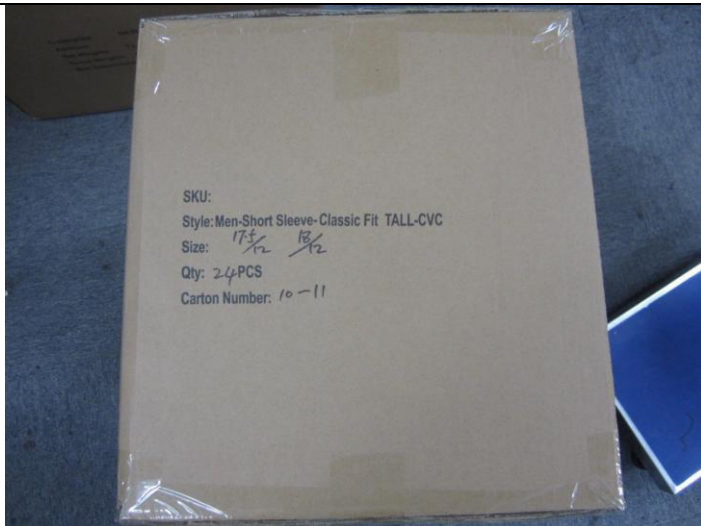
4 Men – Short Sleeve -Classic Fit TALL-CVC



IMG\_1083 Export carton view



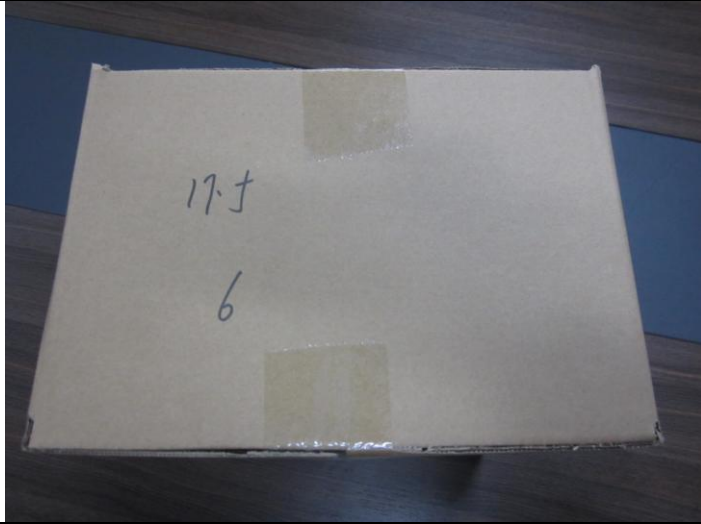
IMG\_1084 Export carton view



IMG\_1085 Export carton view



IMG\_1087 Inner carton view



IMG\_1088 Inner carton view



IMG\_1090 Unit packing view



IMG\_1091 Unit packing view



IMG\_1092 Product view



IMG\_1093 Product view



IMG\_1094 Product view



IMG\_1095 Product view



IMG\_1096 Product view



IMG\_1097 Product view



IMG\_1098 Product view



IMG\_1099 Product view



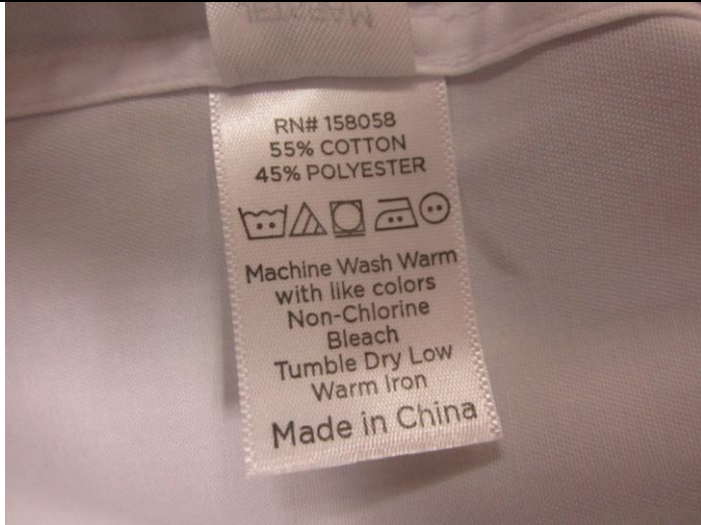
IMG\_1100 Product view



IMG\_1101 Product view



IMG\_1102 Product view



IMG\_1103 Product view



IMG\_1104 Product view



IMG\_1105 Product view

N/A

N/A

5 Men – Short Sleeve –Modern Fit-CVC SPANDEX

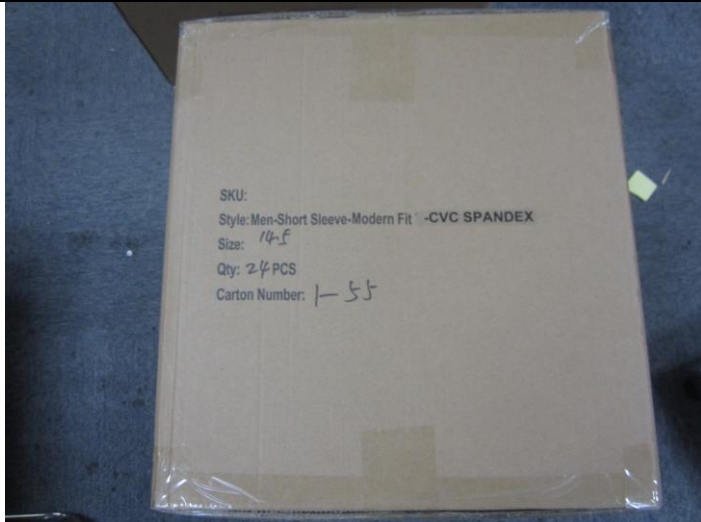


IMG\_1106 Export carton view



Consignee:  
Address:  
Net Weights: 76 KGS  
Gross Weights: 96 KGS  
Box Dimensions: 63CMX41.5CMX45CM

IMG\_1107 Export carton view

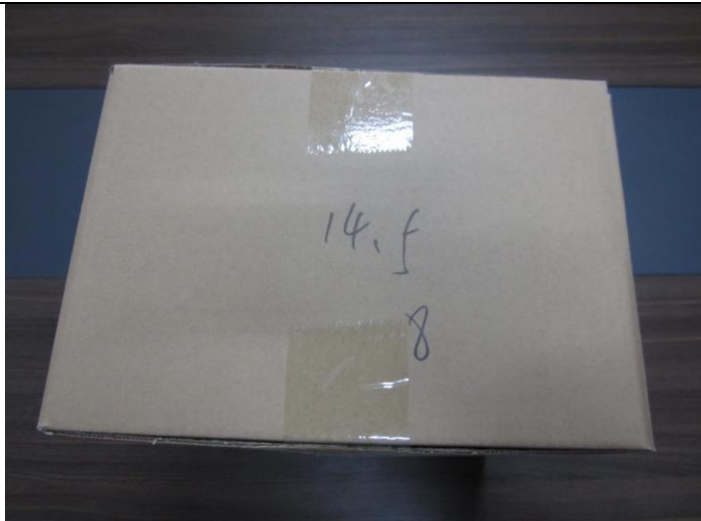


SKU:  
Style: Men-Short Sleeve-Modern Fit -CVC SPANDEX  
Size: 14.5  
Qty: 24 PCS  
Carton Number: 1-55

IMG\_1108 Export carton view



IMG\_1110 Inner carton view



14.5  
8

IMG\_1111 Inner carton view



IMG\_1113 Unit packing view



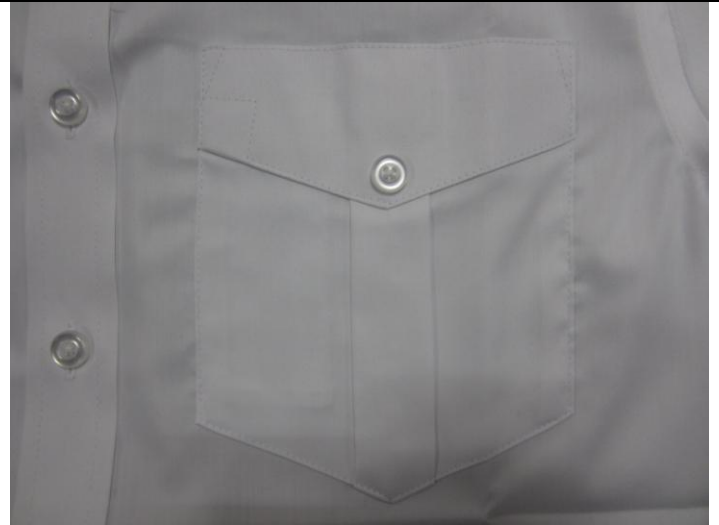
IMG\_1114 Unit packing view



IMG\_1115 Product view



IMG\_1116 Product view



IMG\_1117 Product view



IMG\_1118 Product view



IMG\_1119 Product view



IMG\_1120 Product view



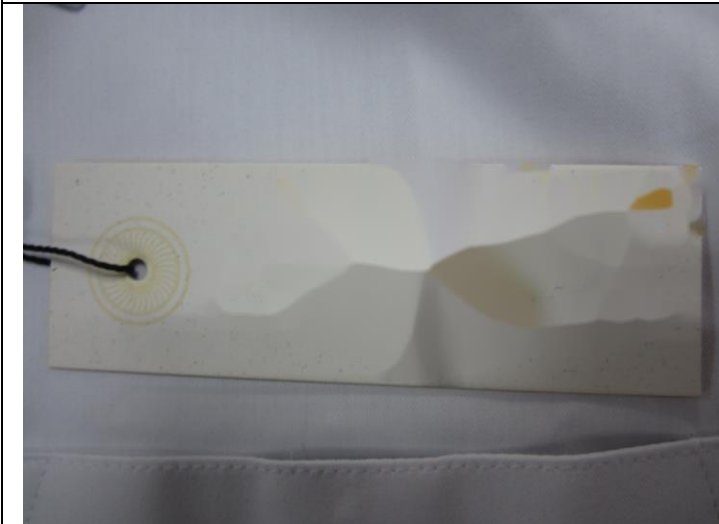
IMG\_1121 Product view



IMG\_1122 Product view



IMG\_1123 Product view



IMG\_1124 Product view



IMG\_1125 Product view





IMG\_1126 Product view



IMG\_1127 Product view



IMG\_1128 Product view



IMG\_1129 Product view

6 Men – Short Sleeve –Slim Fit-CVC SPANDEX



IMG\_1130 Export carton view



Consignee:  
Address:  
Net Weights: 7.5 KGS  
Gross Weights: 10 KGS  
Box Dimensions: 63CMX41.5CMX45 CM

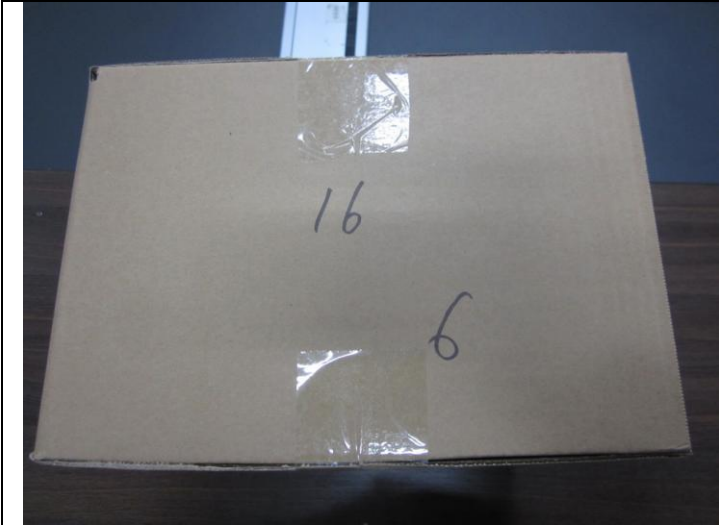
IMG\_1131 Export carton view



IMG\_1132 Export carton view



IMG\_1134 Inner carton view



IMG\_1135 Inner carton view



IMG\_1137 Unit packing view



IMG\_1138 Unit packing view



IMG\_1139 Product view



IMG\_1140 Product view



IMG\_1141 Product view



IMG\_1142 Product view



IMG\_1143 Product view



IMG\_1144 Product view



IMG\_1145 Product view



IMG\_1146 Product view



IMG\_1147 Product view



IMG\_1148 Product view



IMG\_1149 Product view



IMG\_1150 Product view



IMG\_1151 Product view



IMG\_1152 Product view

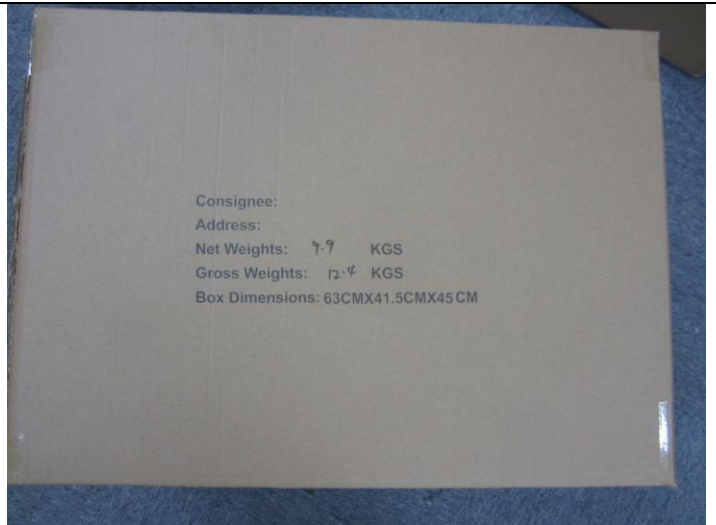


IMG\_1153 Product view

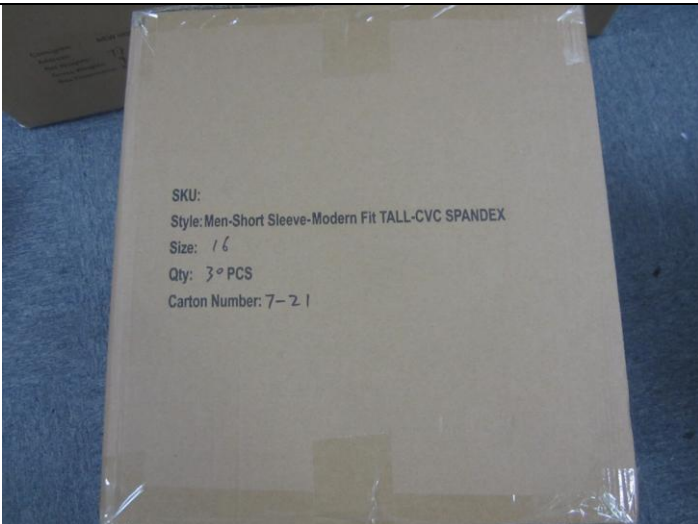
7 Men – Short Sleeve -Modern Fit TALL-CVC SPANDEX



IMG\_1154 Export carton view



IMG\_1155 Export carton view



IMG\_1156 Export carton view



IMG\_1158 Inner carton view



IMG\_1159 Inner carton view



IMG\_1161 Unit packing view



IMG\_1162 Product view



IMG\_1163 Product view



IMG\_1164 Product view



IMG\_1165 Product view



IMG\_1166 Product view



IMG\_1167 Product view



IMG\_1168 Product view



IMG\_1169 Product view



IMG\_1170 Product view



IMG\_1171 Product view



IMG\_1172 Product view



IMG\_1173 Product view



IMG\_1174 Product view



IMG\_1175 Product view



IMG\_1176 Product view

N/A

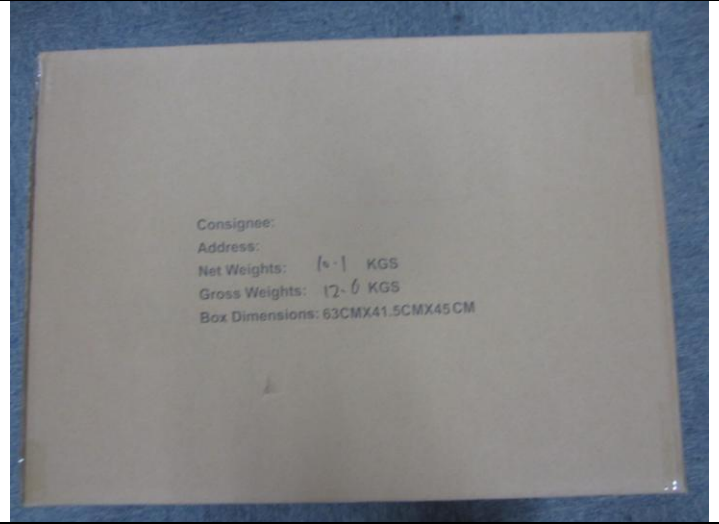
N/A

8 Men – Short Sleeve -Slim Fit TALL-CVC SPANDEX

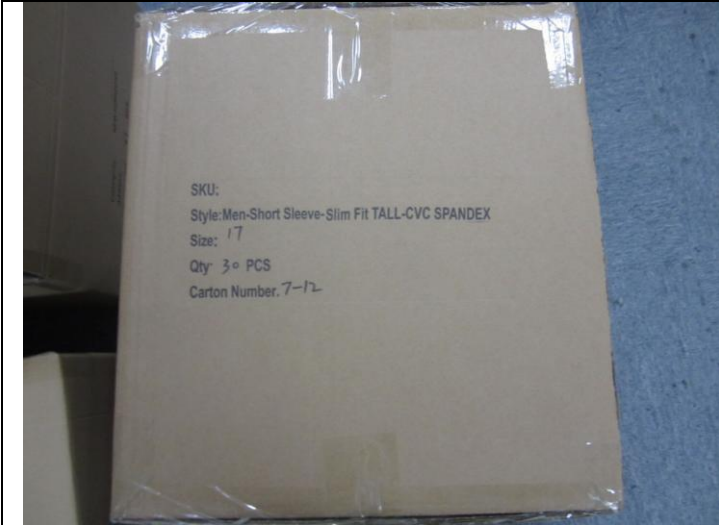




IMG\_1177 Export carton view



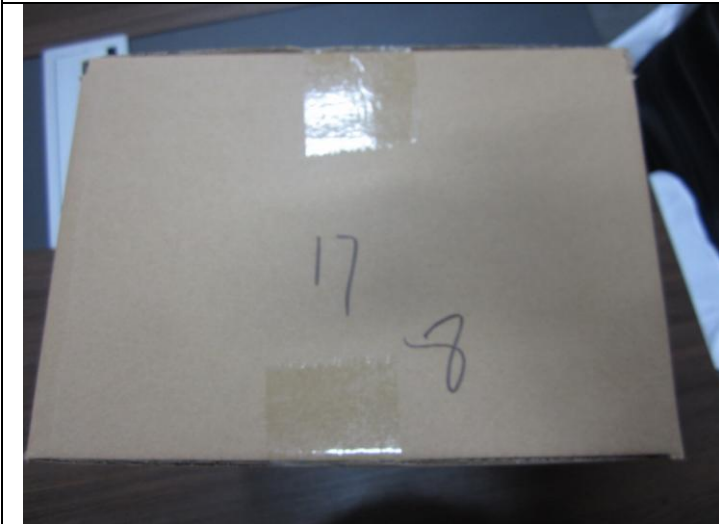
IMG\_1178 Export carton view



IMG\_1179 Export carton view



IMG\_1181 Inner carton view



IMG\_1182 Inner carton view



IMG\_1184 Unit packing view



IMG\_1185 Unit packing view



IMG\_1186 Product view



IMG\_1187 Product view



IMG\_1188 Product view



IMG\_1189 Product view



IMG\_1190 Product view



IMG\_1191 Product view



IMG\_1192 Product view



IMG\_1193 Product view



IMG\_1194 Product view



IMG\_1195 Product view



IMG\_1196 Product view



IMG\_1197 Product view



IMG\_1198 Product view



IMG\_1199 Product view



IMG\_1200 Product view

Test



IMG\_4039 Carton size check



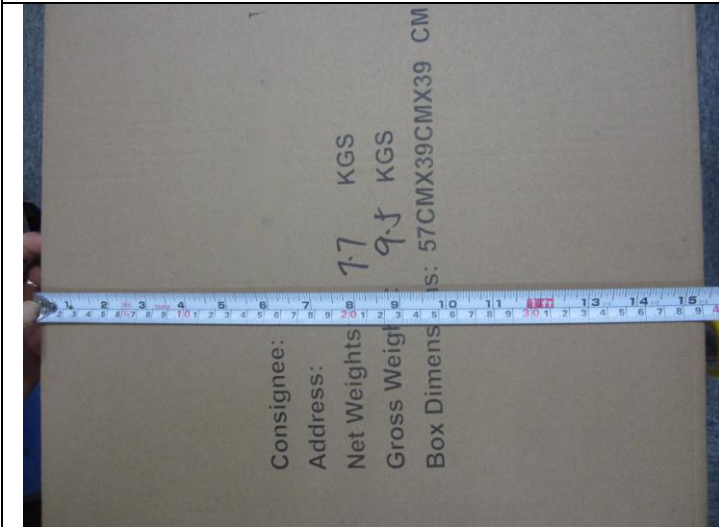
IMG\_4040 Carton size check



IMG\_4041 Carton size check



IMG\_4042 Carton size check



IMG\_4044 Carton size check



IMG\_4045 Carton size check



IMG\_4046 Carton weight check



IMG\_4047 Carton weight check



IMG\_4255 Fabric GSM test



IMG\_4256 Fabric GSM test



IMG\_4257 Fitting check



IMG\_4258 Fitting check



IMG\_4259 Fitting check



IMG\_4260 Color shading check



IMG\_4261 Needle detection test



IMG\_4262 Needle detection test

Others

Packing list for style 1 and 2 (PO: 100114408). Includes columns for style, CTN no., qty per CTN, size, PCS per CTN, total PCS, and total CBM.

Packing list

Packing list for style 3 and 4 (PO: 100114407). Includes columns for style, CTN no., qty per CTN, size, PCS per CTN, total PCS, and total CBM.

Packing list

Packing list for style 5 and 6 (PO: 100114406). Includes columns for style, CTN no., qty per CTN, size, PCS per CTN, total PCS, and total CBM.

Packing list

Packing list for style 7 and 8 (PO: 100114406). Includes columns for style, CTN no., qty per CTN, size, PCS per CTN, total PCS, and total CBM.

Packing list



Storage



Storage



Storage



Storage

**End of this report**