

INSPECTED ARTICLE(S)



A. GENERAL INFORMATION

Client Name	N/A	P.O. Number	N/A
Vendor Name	N/A	Item Number	FD9408
Inspection Date	N/A	Product Name	Drum type vacuum cleaner
Inspection Location	N/A	Booking/Shipment	960 PCS
Inspection Type	Final Random Inspection (FRI)	Total Quantity	
Inspection Material	<input type="checkbox"/> Approval Sample <input type="checkbox"/> Technical File <input checked="" type="checkbox"/> Product Spec <input type="checkbox"/> Packing List <input type="checkbox"/> P.O. <input checked="" type="checkbox"/> Other: Instruction manual		

B. INSPECTION RESULTS

OVERALL CONCLUSION Pending, due to remark# 1--4

INSPECTION SUMMARY	Conform	Not Conform	Pending	Not Applicable	Remark
Critical Check Point <small>(Details refer to section D)</small>	✓				
Visual and Workmanship <small>(Details refer to section E)</small>	✓				
Quantity Conformity <small>(Details refer to section F)</small>	✓				
Product & Product Package Conformity <small>(Details refer to section C)</small>			✓		1, 4
Data Measurement / Field Test <small>(Details refer to section H)</small>	✓		✓		2, 3

E. Visual and Workmanship

[Back To Summary](#)

Inspection Standard	ANSI/ASQ Z1.4 Single Sampling Plan		
Inspection Level	Level-II		
Defect Classification	Critical	Major	Minor
AQL	Not Allowed	1.5	4.0
Sample Size	80	80	80
Details of Defect Found	Critical	Major	Minor
Scratch mark on surface (0.8- 1.5cm)	0	0	2
Untrimmed thread end on soft filter bag (4cm)	0	0	1
Total	0	0	3
Allowed	0	3	7
Result	Within AQL		

Note: You directed that your inspection be based upon Combined sampling, Testcoo advises all clients of the risks associated with "Combined Sampling" where several different product styles are combined to make a single lot size. Combined Sampling represents an increased level of risk to you as statistical rules are compromised and the chances of missing quality issues are much greater than during single style sampling. We disclaim any liability to you if you make decisions concerning the acceptance, payment authorization, or shipment of the inspected goods based upon Combined Sampling.

For Item# FD9408



Scratch mark on surface (0.8- 1.5cm) -- Min



Scratch mark on surface (0.8- 1.5cm) -- Min



Untrimmed thread end on soft filter bag (4cm) -- Min

N/A

N/A

F. Quantity Conformity

[Back To Summary](#)

Item Number	P.O. No	Order Quantity (pieces)	Shipment Qty (pieces)	Presented Qty			QTY Not Finished (pieces)
				Packed Qty (pieces)	Packed Cartons(cartons)	Units Finished Not Packed(pieces)	
FD9408	/	960	960	960	960	0	0
Total		960	960	960	960	0	0
Total_cartons were selected randomly							
Selected carton number:							

G. Product and Package Against Approval Sample/Documents

[Back To Summary](#)

Inspection Reference	Contract			
Check point	Conform	Not Conform	Pending	Not Applicable
Product Appearance	✓			
Accessories			✓	
Packing	✓			
Labeling / Marking	✓			

Packing method

[Back To Summary](#)

For Item # FD9408	
Unit Package	Package: Polybag
Inner Packing	Quantity: N/A Package: N/A
Outer Packing	Quantity: 1 set Package: Color box
	Length: 43cm Width: 35.5cm Height: 47cm Weight: 7.20kg
	Remark: Each unit pack with poly bag, then with an instruction manual or accessory pack were packed into a color box sealed with gummed.

H. Data Measurement / Field Test

[Back To Summary](#)

	Test Item	Test Requirement	Actual Finding	Sample Size	Test Result
H1. 1	Carton Size and Weight Check	Conformance per Spec. and printed information If no specified tolerance, follow +/- 5%	Refer to below chart	1 carton/ style	Actual Finding
H2.	Product Size Check	Conformance per Spec. and printed information If no specified tolerance, follow +/- 3%	Refer to below chart	5pcs	Actual Finding
H3.	Product Weight Check	Conformance per Spec. and printed information If no specified tolerance, follow +/- 3%	Refer to below chart	5pcs	Actual Finding
H4.	Barcode Check	Must be able to be scanned and barcodes are correct as printed	No failure	5pcs/style	Conform
H5.	Carton Drop Test	According to ISTA-1A 1 corner, 3 edges, 6 sides, drop 10 times	See Remark	1 carton/ style	Pending
H6.	Full Assembly Test	Check if the actual parts are compliance to the parts list provided in assembly instruction Perform assembly by reviewing the manufacturer's assembly instructions Nonconformance is not allowed	No failure	5pcs	Conform

H7.	Complex Function Check	Work at each function according to instruction sheet and each functional point should be operated successfully.	No failure	5pcs	Conform
H8.	Screen Printing Quality Check	Place 3M tape on the surface of selected sample and cover the printing as much as possible. Rub the strip with the fingers to insure total surface contact. Lift one end of the tape and remove with a rapid, jerking motion. Repeat this procedure for 5 times. Examine if any loss of the printing or any printing transfer onto the tape	No failure	5pcs	Conform
H9.	High voltage test	Conduct the test for 1 second (5mA) at the voltage required between the tested parts (the voltage refer to the actual category product requirement or otherwise refer to below.) The testing voltage required: For the USA/Canada markets: 1200Vac For European markets: class I 1000Vac class II 2500Vac no insulation breakdown	No failure	Full samples	Conform
H10.	Power consumption check or input power/ current check	The power consumption /input power / current must comply with product spec and safety standard. normally the tolerance should be between +5% and - 10%. <i>[for the appliances of US market]</i> <input type="checkbox"/> +5% / - 10% of its marked rating <i>[for all appliances <=25W rated power input]</i> <input type="checkbox"/> +20% of the rated power _____W <i>[for heating and combined appliances]:</i> <input type="checkbox"/> [<i>>25W and <=200W - spec.</i>] +/- 10% of the rated power _____W <input type="checkbox"/> [<i>>200W - spec.</i>] +5% / - 10% of the rated power _____W <i>[for motor operated appliances]:</i> <input type="checkbox"/> [<i>>25W and <=300W - spec.</i>] +20% of the rated power _____W <input checked="" type="checkbox"/> [<i>>300W - spec.</i>] +15% with the rated power _2000_W	Without loading 220V: 1537- 1562W; 230V 1660- 1714W 240V: 1723- 1824W;	Full samples	Actual Finding
H11.	Power on check	The good condition samples should be operating at full load (preferable) at least 4 hours at rated voltage or time reference the user instruction if less than 4 hours. after testing the samples should pass the hi voltage check, function check, earth continuity check etc., and no defect found.	No failure	5pcs	Conform
H12.	Internal workmanship and critical component check	Check internal construction completement and main components according with CDF (Constructional Data Form) or CCL (critical components list)	See Remark	5pcs	Pending
H13.	Vacuum pressure check	Shall comply with claimed spec.	20.5 - 22.99 kpa	Full samples	Actual Finding
H14.	Power cord strain relief test	IEC standard: Pull on the cord for 25 times If the product has a net weight <= 1kg, use a force of 30N. If the product has a net weight 1kg > , <= 4kg, use a force of 60N .	No failure	5pcs	Conform

		If the product has a net weight > 4 kg, use a force of 100N - The cord should not be displaced more than 2mm. UL standard: Pull on the cord for 35 lb 1min the cord should not be displaced .			
H15.	Motor locking check	Locking the motor under rated voltage supplying. the product shall not cause hazard to the user or surrounding, ignition of the enclosure material, emission of flame or molten metal, nor glowing or flaming of the material shall not occur.	See Remark	1pcs	Pending
H16.	Low voltage starting check	It should be started at 90% of rated voltage.	No failure	5pcs	Conform

Measurement chart

[Back To Summary](#)

Item No	Checking	Product weight (g)	Product size (cm)	Power cord length (cm)	Color box size (cm))	Color box weight (kg)
FD9408	Spec.	/	/	/	/	/
	Sample 1	6.06	34x40x49.7	410	43x35x47	7.22
	Sample 2	6.08	34x40x49.7	409		
	Sample 3	6.10	34x40x49.7	409		
	Sample 4	6.08	34x40x49.7	410		
	Sample 5	6.08	34x40x49.7	408		

VALIDATION TEAM

Inspected by Inspection date	TC651651 /
Reviewed by Review date	
Approved by Review date	

PHOTOS

[Back To Summary](#)



IMG_001Color box view



IMG_002Color box view



IMG_003Color box view



IMG_004Color box view



IMG_005Color box view



IMG_006Color box view



IMG_007Color box view



IMG_008Color box view



IMG_009Color box view



IMG_010Color box view



IMG_011Color box view



IMG_012Color box view



IMG_013Color box view



IMG_014Color box view



IMG_021Product package



IMG_022Product package



IMG_023Product package



IMG_024Product package



IMG_025Product package



IMG_026Product package



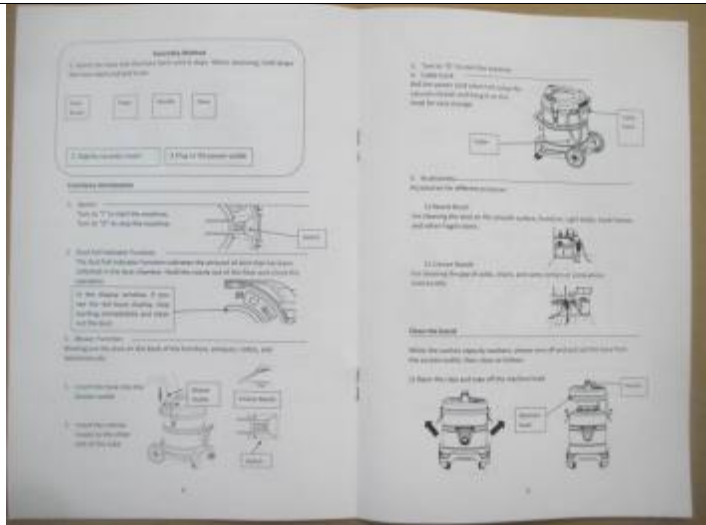
IMG_030Instruction manual



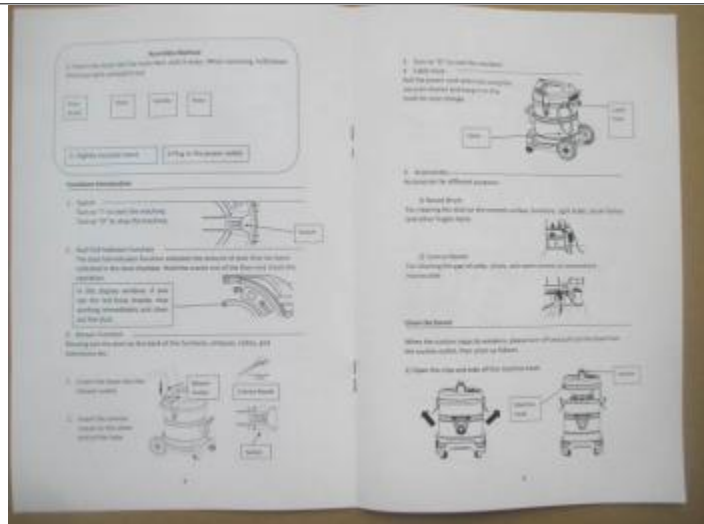
IMG_031Instruction manual



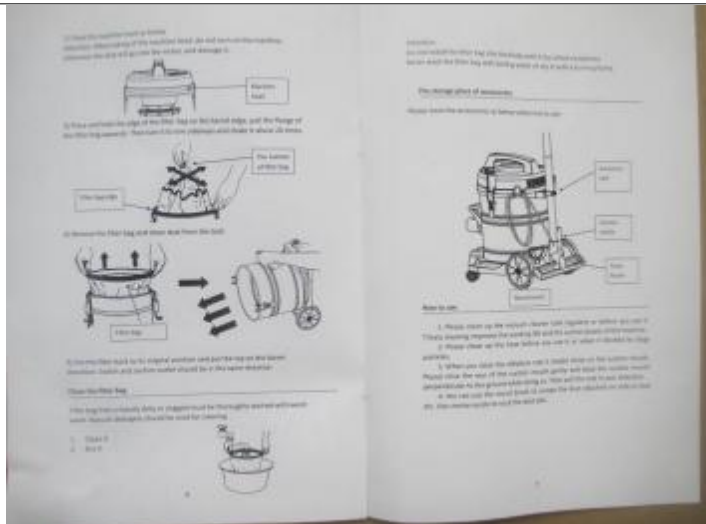
IMG_032Instruction manual



IMG_033Instruction manual



IMG_034Instruction manual



IMG_035Instruction manual



IMG_036A set product view



IMG_037A set product view



IMG_040 Big wheels



IMG_041 Universal wheels



IMG_042 Crevice nozzle



IMG_043 Crevice nozzle



IMG_045Round brush



IMG_046Round brush



IMG_047Round brush



IMG_050 Metallic wands



IMG_051 Metallic wands



IMG_052 Metallic wands



IMG_053 Metallic wands



IMG_054 Metallic wands



IMG_055 Metallic wands



IMG_057Floor brush



IMG_058Floor brush



IMG_059Floor brush



IMG_060Floor brush



IMG_061Floor brush



IMG_062Floor brush



IMG_063Floor brush



IMG_064Floor brush



IMG_065Floor brush



IMG_066Floor brush



IMG_069Plastic house



IMG_070Plastic house



IMG_071Plastic house



IMG_072Plastic house



IMG_075Soft filter bag



IMG_076Soft filter bag



IMG_080Product view



IMG_081Product view



IMG_082Product view



IMG_083Product view



IMG_084Product view



IMG_085Product view



IMG_086Product view



IMG_085Product view



IMG_086Product view



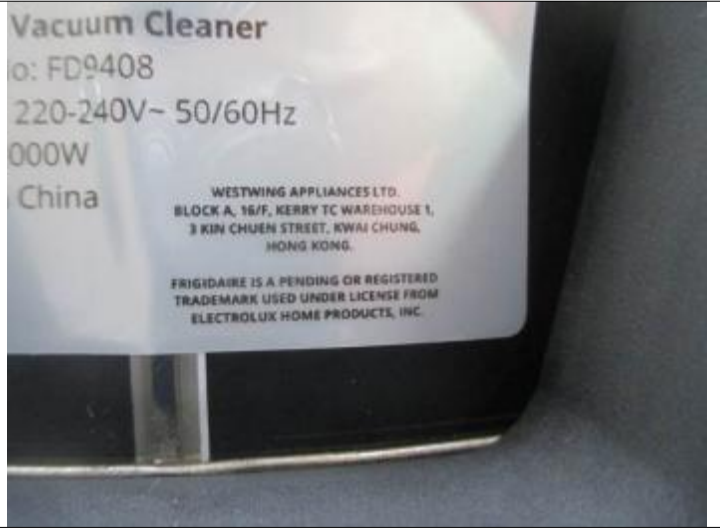
IMG_087Product view



IMG_088Product view



IMG_089Product view



IMG_090Product view



IMG_091Product view



IMG_092Product view



IMG_093Product view



IMG_094Product view



IMG_095Product view



IMG_096Product view



IMG_097Product view



IMG_098Product view



IMG_099Product view



IMG_100Product view



IMG_101Product view



IMG_102Product view



IMG_103Product view



IMG_104Product view



IMG_105Product view



IMG_106Product view



IMG_107Product view



IMG_108Product view



IMG_109Product view



IMG_110Product view



IMG_111Product view



IMG_115Plug



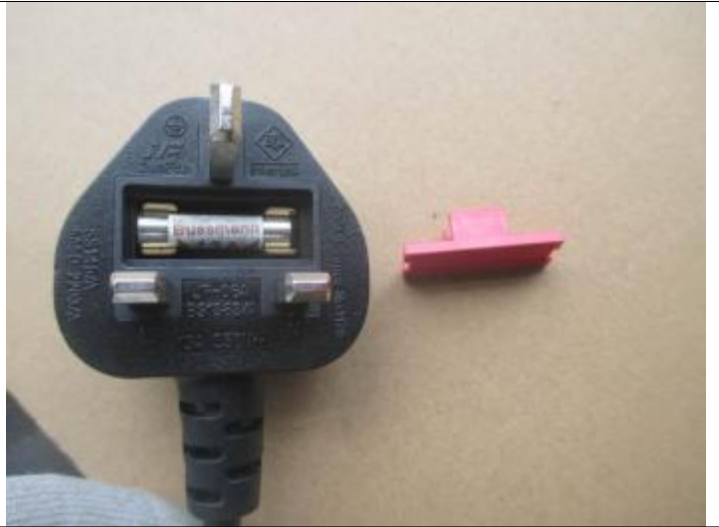
IMG_116Plug



IMG_117Plug



IMG_118Plug



IMG_119Plug



IMG_120Plug



IMG_121 Fuse



IMG_122 Fuse



IMG_123Plug



IMG_124Plug



IMG_125Plug



IMG_126Plug



IMG_127Plug



IMG_128Power cord



IMG_129Power cord

Dimension parts



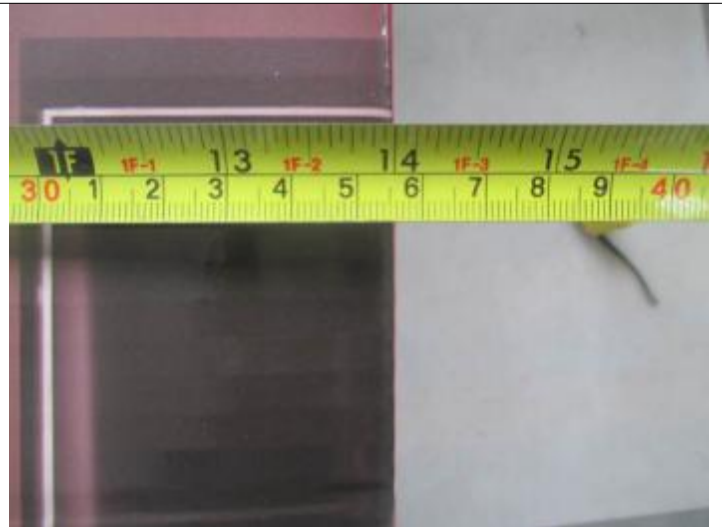
IMG_201Color box size check



IMG_202Color box size check



IMG_203Color box size check



IMG_204Color box size check



IMG_205Color box size check



IMG_206Color box size check



IMG_207 Color box weight check



IMG_209



IMG_210 Plastic hose size check



IMG_211 Plastic hose size check



IMG_212 Wheel size check



IMG_213 Wheel size check



IMG_215 Brush size check



IMG_216 Brush size check



IMG_217 Brush size check



IMG_218 Brush size check



IMG_219 Length of power cord check



IMG_220 Length of power cord check



IMG_221 Product size check



IMG_223 Product size check



IMG_224 Product size check



IMG_225 Product size check



IMG_226 Product size check



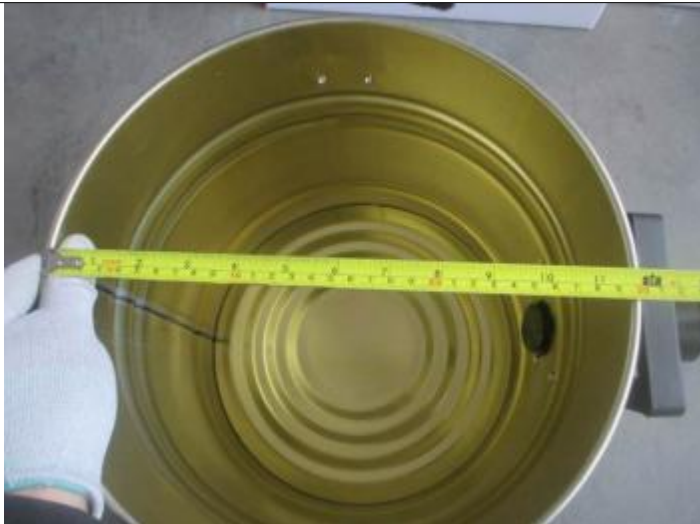
IMG_227 Product size check



IMG_229 Product weight check



IMG_230 Drum size check



IMG_231 Drum size check



IMG_232 Drum size check



Barcode Check



Barcode Check



Label rub check



Label rub check



Screen Printing Quality Check



Screen Printing Quality Check



Full Assembly Test



Full Assembly Test



High voltage test



High voltage test



Power on check



Power on check



Power cord strain relief test



Power cord strain relief test



Low voltage starting check



Low voltage starting check



Vacuum pressure check



Vacuum pressure check



Vacuum pressure check



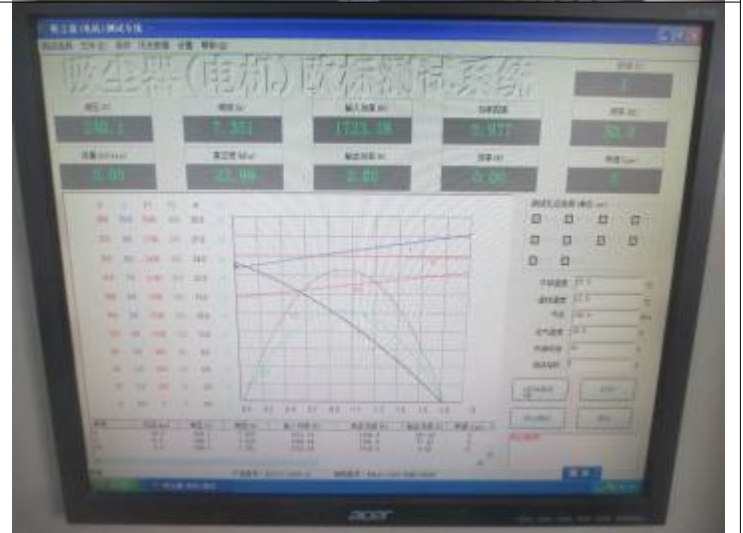
Vacuum pressure check

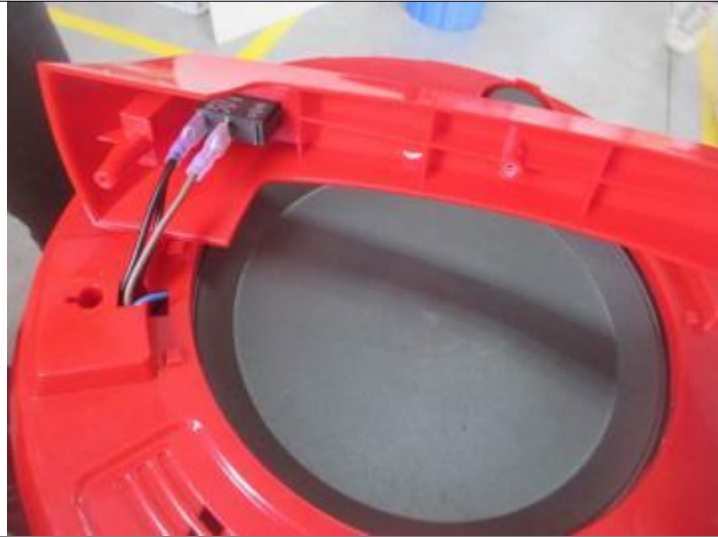


Power consumption check



Power consumption check





Internal workmanship and critical component check

Internal workmanship and critical component check



Internal workmanship and critical component check

Internal workmanship and critical component check



Internal workmanship and critical component check

Internal workmanship and critical component check



Internal workmanship and critical component check

Clause	Requirement + Test	Result - Remarks	Verdict
Alternative	Open Electronics Co., Ltd. MPX 275V ~ X2, 0.22µF, 40110550B	IEC 60384-14	VDE / 40014708
Alternative	Dongguan Weisong Electronic Co., Ltd. MPX 275V ~ X2, 0.22µF, 40110550B	IEC 60384-14	VDE / 40014930
Alternative	Guangdong JURCC electronics Co., LTD. MPX/MPX 275V ~ X2, 0.22µF, 40110550B	IEC 60384-14	VDE / 40034020
Alternative	Terfa Electric Industrial Co., Ltd. MEX 275V ~ X2, 0.22µF, 40110521B	IEC 60384-14	VDE / 119118
Alternative	Terfa Electric Industrial Co., Ltd. MEX 275V ~ X2, 0.22µF, 40110521B	IEC 60384-14	VDE / 119419
Motor	SIP ANDERSON MOTOR CO., LTD. HCC-PHL22 AC 220-240V, 50/60Hz, Class105	IEC 60335-1 IEC 60335-2-2	Tested with appliance
Enclosure (top and bottom)	Yongkang Sipoon Electric Co., Ltd. PP Min thickness: 1.0mm	IEC 60335-1 IEC 60335-2-2	Tested with appliance
Handle	Yongkang Sipoon Electric Co., Ltd. PP Min thickness: 2.0mm	IEC 60335-1 IEC 60335-2-2	Tested with appliance
Flame	PananJinnu Plastic Products Factory EVA Min thickness: 2.0mm	IEC 60335-1 IEC 60335-2-2	Tested with appliance
House handle	Yongkang Sipoon Electric Co., Ltd. PP Min thickness: 2.0mm	IEC 60335-1 IEC 60335-2-2	Tested with appliance
Thermal motor protector (optional)	Changzhou Amsun Electronics Technical Co., Ltd. T1AM-D 250V ~ 105°C, 110°C, 115°C, 120°C	EN 60730-1 EN 60730-2-2	VDE / 40032700

Supplementary information:
*) Provided evidence meets the agreed level of compliance. See 002008.

Internal workmanship and critical component check



Internal workmanship and critical component check

Clause	Requirement + Test	Result - Remarks	Verdict
Switch	Yuejin Xinlai Electrical Co., Ltd. KD-08/1-A 250V ~ 14(12)A-16A, T85	IEC 60898-1	TUV NGA, IEC 60898-1, VDE 40042867
Alternative	Dongguan HUACORN Electronics Co., Ltd. H55 250V ~ 16A, T115, 10E3	IEC 60898-1	VDE 40042867
Alternative	Shanghai Qike Electronic Co., Ltd. RT1 250V ~ 16A, T115, 10E3	IEC 61886-1	SI 1519374
Internal wire	Hangzhou Dash Cable Factory RV90 300/500V, 90°C, 0.75mm² or 1.0mm²	IEC 60335-1 IEC 60335-2-2	Tested with appliance
Alternative	TONGDONG XIN TIANHONG WIRE CABLE CO., LTD. RV90 300/500V, 90°C, 0.75mm² or 1.0mm²	IEC 60335-1 IEC 60335-2-2	Tested with appliance
Alternative	Wenzhou Zhongnan Wire & Cable Co., Ltd. RV90 300/500V, 90°C, 0.75mm² or 1.0mm²	IEC 60335-1 IEC 60335-2-2	Tested with appliance
Alternative	Xiangshan Haogang Electric Wire & Cable Co., Ltd. RV90 300/500V, 90°C, 0.75mm² or 1.0mm²	IEC 60335-1 IEC 60335-2-2	Tested with appliance
Alternative	DONG GUAN SHENG PAI ELECTRIC WIRE & CABLE CO LTD RV90 300/500V, 90°C, 0.75mm² or 1.0mm²	IEC 60335-1 IEC 60335-2-2	Tested with appliance
Alternative	3C Wire & Cable Co., Ltd. RV90 300/500V, 90°C, 0.75mm² or 1.0mm²	IEC 60335-1 IEC 60335-2-2	Tested with appliance
Alternative	7/8 EAST CABLE CO., LTD. RV90 300/500V, 90°C, 0.75mm² or 1.0mm²	IEC 60335-1 IEC 60335-2-2	Tested with appliance

Internal workmanship and critical component check



Internal workmanship and critical component check

Clause	Requirement + Test	Result - Remarks	Verdict
Switch	Yuejin Xinlai Electrical Co., Ltd. KD-08/1-A 250V ~ 14(12)A-16A, T85	IEC 60898-1	TUV NGA, IEC 60898-1, VDE 40042867
Alternative	Dongguan HUACORN Electronics Co., Ltd. H55 250V ~ 16A, T115, 10E3	IEC 60898-1	VDE 40042867
Alternative	Shanghai Qike Electronic Co., Ltd. RT1 250V ~ 16A, T115, 10E3	IEC 61886-1	SI 1519374
Internal wire	Hangzhou Dash Cable Factory RV90 300/500V, 90°C, 0.75mm² or 1.0mm²	IEC 60335-1 IEC 60335-2-2	Tested with appliance
Alternative	TONGDONG XIN TIANHONG WIRE CABLE CO., LTD. RV90 300/500V, 90°C, 0.75mm² or 1.0mm²	IEC 60335-1 IEC 60335-2-2	Tested with appliance
Alternative	Wenzhou Zhongnan Wire & Cable Co., Ltd. RV90 300/500V, 90°C, 0.75mm² or 1.0mm²	IEC 60335-1 IEC 60335-2-2	Tested with appliance
Alternative	Xiangshan Haogang Electric Wire & Cable Co., Ltd. RV90 300/500V, 90°C, 0.75mm² or 1.0mm²	IEC 60335-1 IEC 60335-2-2	Tested with appliance
Alternative	DONG GUAN SHENG PAI ELECTRIC WIRE & CABLE CO LTD RV90 300/500V, 90°C, 0.75mm² or 1.0mm²	IEC 60335-1 IEC 60335-2-2	Tested with appliance
Alternative	3C Wire & Cable Co., Ltd. RV90 300/500V, 90°C, 0.75mm² or 1.0mm²	IEC 60335-1 IEC 60335-2-2	Tested with appliance
Alternative	7/8 EAST CABLE CO., LTD. RV90 300/500V, 90°C, 0.75mm² or 1.0mm²	IEC 60335-1 IEC 60335-2-2	Tested with appliance

Internal workmanship and critical component check



Loading check 25kg



Loading check



Actual function check



Actual function check



Actual function check



Actual function check



Actual function check



Actual function check



Actual function check



Actual function check



Actual function check



Actual function check



Factory gate



Finished goods at warehouse



Finished goods at warehouse



Finished goods at warehouse

End of this report